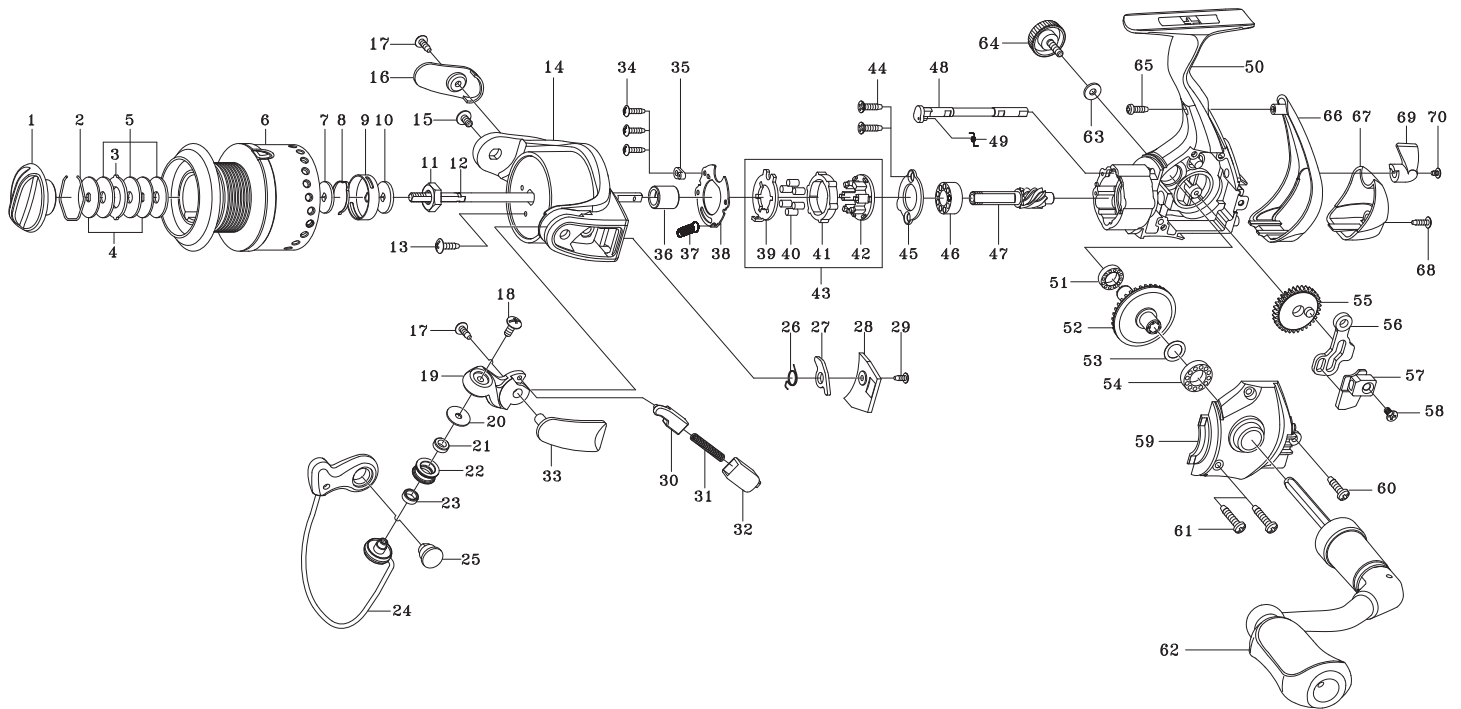


## SPINNING REEL

## GT3000 / 3500 / 3000H / 3500H

Please order by parts number, not key number  
Bitte, Best.-Nr. angeben (Nicht "key" -nr.)  
Veuillez indiquer le numero de la piece (Non "key" no.)

**Key NO.****Parts No.****Parts name**

2-6	2YT-205-01	SPOOL TOTAL ASSEMBLY
1	2YD-054-01	DRAG KNOB ASSEMBLY
2	2E4-009-01	DRAG WASHER RETAINER
3	2W3-014-01	EARED WASHER
4	2W2-013-01	KEY WASHER
5	2W1-052-01	050-187 WASHER
6	2YS-163-01	SPOOL ASSEMBLY
7	2W2-020-01	KEY WASHER
8	2L3-014-01	CLICK LEAF SPRING
9	2F8-013-01	CLICK LEAF SPRING HOLDER
10	2W2-015-01	KEY WASHER
11	2E3-007-01	ROTOR NUT
12	2M3-056-01	MAIN SHAFT
13	2E1-036-01	B26-040 SCREW
14	2R1-070-01	ROTOR
15	2E2-004-01	B30M-060 SCREW
16	2R4-094-01	BAIL TRIP COVER
17	2E1-016-02	B26-080 SCREW
18	2E2-018-01	B30M-080 SCREW
19	2R2-031-01	BAIL ARM
20	2C1-034-01	LINE ROLLER COLLAR
21	2Z1-012-02	407-2.5 BALL BEARING
22	2R6-020-01	LINE ROLLER
23	2C2-032-01	LINE ROLLER BUSH
24	2YL-081-01	BAIL ASSEMBLY
25	2E3-019-01	BAIL HOLDER NUT
26	2Q3-056-01	BAIL TRIP LEVER SPING
27	2R5-089-01	BAIL TRIP LEVER
28	2F5-176-01	ROTOR COVER
29	2E1-020-02	B22-055 SCREW
30	2R5-090-01	BAIL TRIP SHAFT
31	2Q1-023-01	BAIL SPRING
32	2C2-069-01	BAIL SPRING GUIDE
33	2R4-095-01	BAIL SPRING COVER
34	2E1-029-01	B22-090 SCREW
35	2F8-079-01	ANTI-REVERSE SPRING ANCHOR
36	2A4-021-01	ONE-WAY CLUTCH INNER TUBE
37	2Q2-016-01	SPRING
38	2F5-192-01	ROLLER CLUTCH RETAINER
39	2F2-028-01	ANTI-REVERSE PAWL
40	2Z3-001-01	ROLLER
41	2A3-008-01	ANTI-REVERSE RATCHET
42	2F8-078-01	CAGE
43	2YZ-014-01	ONE-WAY CLUTCH BEARING ASSEMBLY
44	2E1-067-01	F26-090 SCREW
45	2F5-193-01	BEARING RETAINER

**Key NO.****Parts No.****Parts name**

46	2Z1-003-01	714-5 BALL BEARING
47	2G2-077-01	PINION GEAR
48	2A2-048-01	ANTI-REVERSE CAM
49	2Q3-009-01	ANTI-REVERSE SPRING
50	2B1-063-01	BODY
51	2Z1-009-01	711-3 BALL BEARING
52	2G1-048-01	DRIVE GEAR
53	2W1-035-00	080-105 WASHER
54	2Z1-010-02	812-3.5 BALL BEARING
55	2G3-041-01	OSCILLATING GEAR
56	2M2-006-01	OSCILLATING SLIDER CRANK
57	2M1-033-02	OSCILLATING SLIDER
58	2E2-009-01	F23M-060 SCREW
59	2B2-038-01	BODY COVER
60	2E1-055-01	A26-100 SCREW
61	2E1-031-01	A26-140 SCREW
62	2YH-151-01	HANDLE TOTAL ASSEMBLY
63	2W1-004-01	029-080 WASHER
64	2H6-001-10	HANDLE SCREW CAP
65	2E1-045-01	A26-080 SCREW
66	2F5-187-01	REAR COVER A
67	2F5-188-01	REAR COVER B
68	2E1-048-01	B22-080 SCREW
69	2A1-025-03	ANTI-REVERSE LEVER
70	2E2-013-02	B20M-060 SCREW
GT3500	SPECIAL PARTS	
2-6	2YT-206-01	SPOOL TOTAL ASSEMBLY
6	2YS-164-01	SPOOL ASSEMBLY
14	2R1-071-01	ROTOR
24	2YL-082-01	BAIL ASSEMBLY
27	2R5-091-01	BAIL TRIP LEVER
28	2F5-179-01	ROTOR COVER
GT3000H	SPECIAL PARTS	
2-6	2YT-205-02	SPOOL TOTAL ASSEMBLY
6	2YS-163-02	SPOOL ASSEMBLY
47	2G2-078-01	PINION GEAR
52	2G1-061-01	DRIVE GEAR
GT3500H	SPECIAL PARTS	
2-6	2YT-206-02	SPOOL TOTAL ASSEMBLY
6	2YS-164-02	SPOOL ASSEMBLY
14	2R1-071-01	ROTOR
24	2YL-082-01	BAIL ASSEMBLY
27	2R5-091-01	BAIL TRIP LEVER
28	2F5-179-01	ROTOR COVER
47	2G2-078-01	PINION GEAR
52	2G1-061-01	DRIVE GEAR