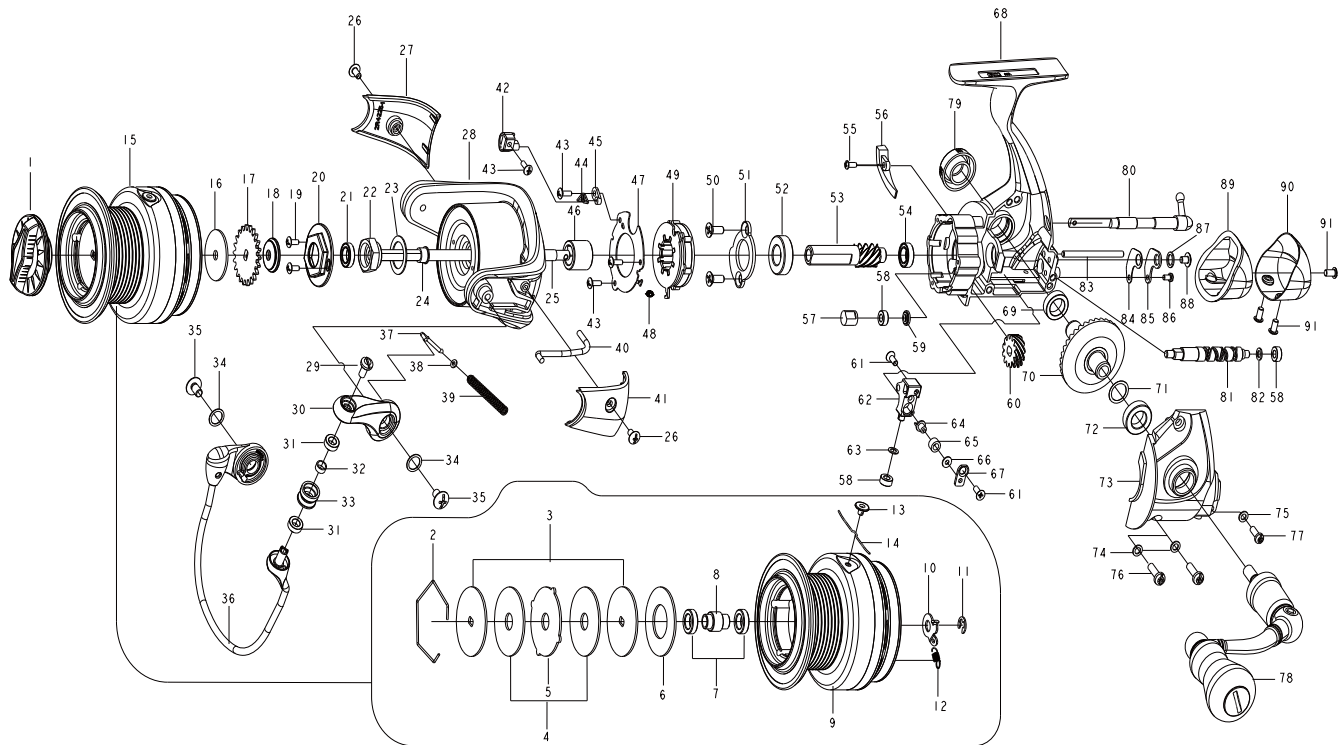


TG3000

GEAR RATIO (6.3/5.2)



Key NO.	Parts No.	Parts name	Key NO.	Parts No.	Parts name	Key NO.	Parts No.	Parts name
1	2YD-112-01	DRAG KNOB ASSEMBLY	33	2R6-022-02	LINE ROLLER	65	2C2-034-01	LINE GUIDE PIN BUSH
2	2E4-040-01	DRAG WASHER RETAINER	34	2W1-283-01	060-080 WASHER	66	2W1-058-04	030-050 WASHER
3	2W2-088-02	KEY WASHER	35	2E2-015-04	B35M-060 SCREW	67	2F5-181-01	OSCILLATING SLIDER COVER
4	2W1-263-02	070-285 WASHER	36	2YL-177-01	BAIL ASSEMBLY	68	2YB-138-51	BODY ASSEMBLY
5	2W3-041-01	EARED WASHER	37	2R5-188-01	BAIL TRIP SHAFT	69	2Z1-010-02	812-3.5 BALL BEARING
6	2W1-264-02	140-285 WASHER	38	2W1-044-01	016-035 WASHER	70	2G1-169-01	DRIVE GEAR
7	2Z1-013-05	610-3 BALL BEARING	39	2Q1-132-02	BAIL SPRING	71	2W1-035-00	080-105 WASHER
8	2C1-134-01	COLLAR	40	2R5-198-01	BAIL PAWL	72	2Z1-023-05	814-4 BALL BEARING
9	2S1-419-01	SPOOL	41	2R4-225-01	BAIL TRIP COVER	73	2B2-037-03	BODY COVER
10	2F4-023-01	CLICK PAWL	42	2A2-060-01	CAM	74	2W1-058-06	030-050 WASHER
11	2E5-013-01	E3.0 RETAINER	43	2E2-013-02	B20M-060 SCREW	75	2W1-127-02	027-048 WASHER
12	2Q2-007-01	CLICK PAWL SPRING	44	2Q3-009-01	ANTI-REVERSE SPRING	76	2E2-060-03	A30M-100 SCREW
13	2S4-019-01	LINE STOPPER	45	2F8-079-01	ANTI-REVERSE SPRING ANCHOR	77	2E2-031-01	A26M-075 SCREW
14	2Q3-121-01	SPRING	46	2A4-026-01	ONE-WAY CLUTCH INNER TUBE	78	2YH-469-01	HANDLE TOTAL ASSEMBLY
15	2YT-515-01	SPOOL TOTAL ASSEMBLY	47	2F5-189-01	ROLLER CLUTCH RETAINER	79	2H6-015-01	HANDLE SCREW CAP
16	2W1-280-01	090-260 WASHER	48	2Q2-016-01	SPRING	80	2A2-059-02	ANTI-REVERSE CAM
17	2F3-074-02	CLICK GEAR	49	2YZ-017-01	ONE-WAY CLUTCH BEARING ASSEMBLY	81	2M4-018-01	WORM SHAFT
18	2E9-053-01	PROOF WATER RING	50	2E2-011-01	F30M-080 SCREW	82	2W1-058-03	030-050 WASHER
19	2E2-092-01	B20M-050 SCREW	51	2F5-203-01	BEARING RETAINER	83	2P1-025-01	OSCILLATING SLIDER PIN
20	2F6-120-01	ROTOR NUT HOLDING PLATE	52	2Z1-005-05	816-5 BALL BEARING	84	2W5-031-01	WORM SHAFT COVER GASKET
21	2Z1-030-05	610-2.5 BALL BEARING	53	2G2-069-01	PINION GEAR	85	2F5-161-01	WORM SHAFT COVER
22	2E3-093-01	ROTOR NUT	54	2Z1-013-05	610-3 BALL BEARING	86	2E2-050-01	A20M-035 SCREW
23	2W1-198-01	111-158 WASHER	55	2E2-099-01	B20M-050 SCREW	87	2W1-124-02	045-065 WASHER
24	2C2-061-01	WORM SHAFT COLLAR	56	2B4-019-01	BODY COVER FLANGE	88	2E2-003-01	B26M-036 SCREW
25	2M3-169-01	MAIN SHAFT	57	2C2-036-01	WORM SHAFT BUSH	89	2F6-054-01	WATER SHIELD
26	2E2-006-03	B26M-050 SCREW	58	2Z1-014-05	306-2.5 BALL BEARING	90	2F5-162-02	REAR COVER
27	2R4-226-01	BAIL TRIP COVER	59	2C1-071-01	WORM SHAFT COLLAR	91	2E2-095-01	B26M-050 SCREW
28	2R1-160-01	ROTOR	60	2G3-044-01	OSCILLATING GEAR	TG3000<5.2> SPECIAL PARTS		
29	2E0-031-02	X30M-070 SCREW	61	2E2-009-01	F23M-060 SCREW	9	2S1-419-02	SPOOL
30	2R2-077-01	BAIL ARM	62	2M1-032-01	OSCILLATING SLIDER	13	2YT-515-02	SPOOL TOTAL ASSEMBLY
31	2Z1-012-05	407-2.5 BALL BEARING	63	2W1-058-02	030-050 WASHER	51	2G2-056-01	PINION GEAR
32	2C1-077-01	LINE ROLLER COLLAR	64	2M5-007-01	LINE GUIDE PIN	58	2G3-037-01	WORM SHAFT GEAR
						68	2G1-168-01	DRIVE GEAR

Please order by parts number, not key number *Bitte, Best.-Nr. angeben (Nicht "key" -nr.)*
 Veuillez indiquer le numero de la pièce (Non "key" no.)