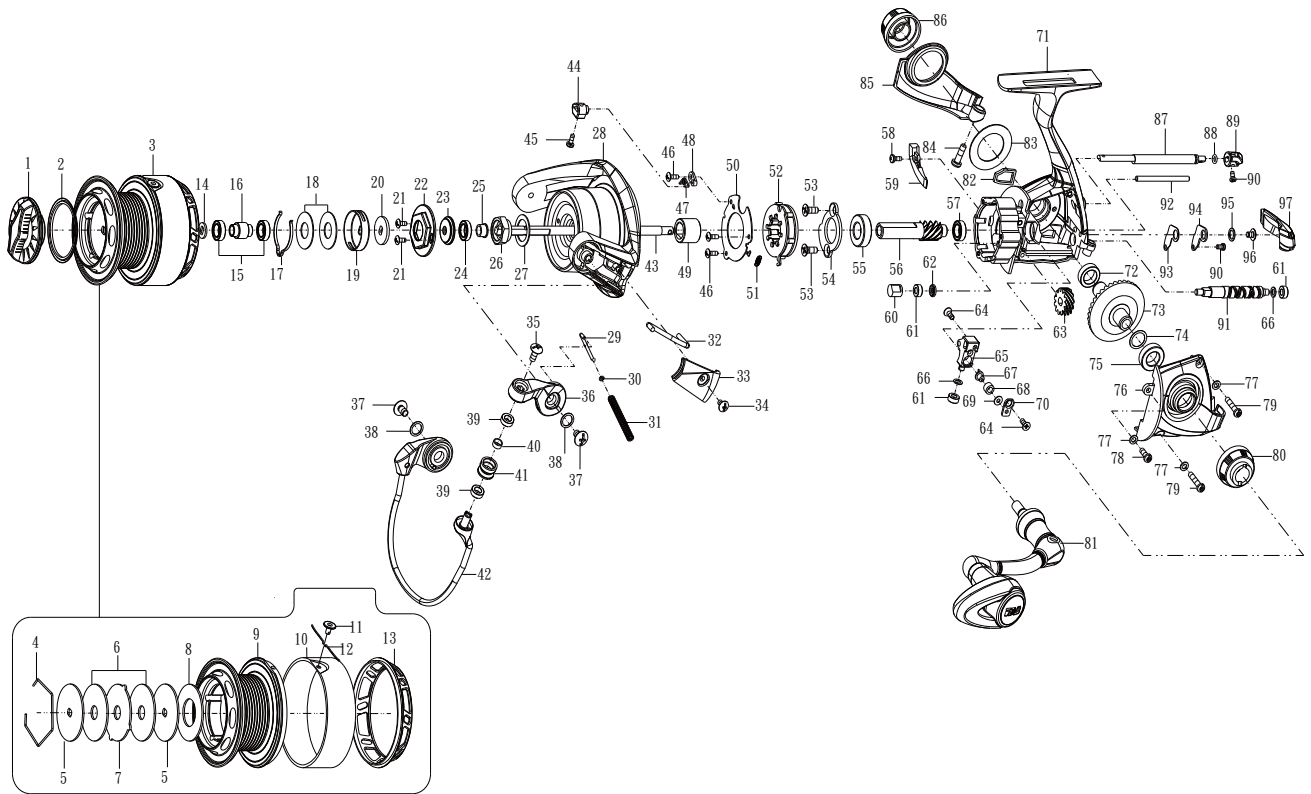


TBAT3000/TBAT3000H



Key NO.	Parts No.	Parts name	Key NO.	Parts No.	Parts name	Key NO.	Parts No.	Parts name
1	2YD-115-01	DRAG KNOB ASSEMBLY	36	2R2-080-01	BAIL ARM	71	2B1-214-01	BODY
2	2E9-052-01	PROOF WATER RING	37	2E2-015-04	B35M-060 SCREW	72	2Z1-010-05	812-3.5 BALL BEARING
3	2YT-530-01	SPOOL TOTAL ASSEMBLY	38	2W1-283-01	060-080 WASHER	73	2G1-168-01	DRIVE GEAR
4	2E4-040-01	DRAG WASHER RETAINER	39	2Z1-012-05	407-2.5 BALL BEARING	74	2W1-035-00	080-105 WASHER
5	2W2-088-02	KEY WASHER	40	2C1-077-01	LINE ROLLER COLLAR	75	2Z1-023-05	814-4 BALL BEARING
6	2W1-263-02	070-285 WASHER	41	2R6-022-02	LINE ROLLER	76	2YC-123-01	BODY COVER ASSEMBLY
7	2W3-041-01	EARED WASHER	42	2YL-191-01	BAIL ASSEMBLY	77	2W1-127-02	027-048 WASHER
8	2W1-264-02	140-285 WASHER	43	2M3-174-01	MAIN SHAFT	78	2E2-031-01	A26M-075 SCREW
9	2YS-308-01	SPOOL ASSEMBLY	44	2A2-060-01	CAM	79	2E2-039-01	A26M-120 SCREW
10	2N1-084-01	CARBON BELT	45	2E2-099-01	B20M-050 SCREW	80	2B4-032-01	BODY FLANGE
11	2S4-019-02	LINE STOPPER	46	2E2-013-02	B20M-060 SCREW	81	2YH-483-01	HANDLE TOTAL ASSEMBLY
12	2Q3-121-01	SPRING	47	2Q3-009-01	ANTI-REVERSE SPRING	82	2E9-058-01	PROOF WATER RING
13	2S5-069-01	SPOOL COVER	48	2F8-079-01	ANTI-REVERSE SPRING ANCHOR	83	2W1-285-01	225-158 WASHER
14	2W2-014-01	KEY WASHER	49	2A4-026-01	ONE-WAY CLUTCH INNER TUBE	84	2E2-060-03	A30M-100 SCREW
15	2Z1-013-05	610-3 BALL BEARING	50	2F5-189-01	ROLLER CLUTCH RETAINER	85	2F5-488-01	CLEAN DECORATIVE COVER CAP
16	2C1-139-01	COLLAR SPACER	51	2Q2-016-01	SPRING	86	2H6-022-01	HANDLE SCREW CAP
17	2L3-014-01	CLICK LEAF SPRING	52	2YZ-017-01	ONE-WAY CLUTCH BEARING ASSEMBLY	87	2A2-121-01	ANTI-REVERSE CAM
18	2W1-053-02	080-185 WASHER	53	2E2-011-02	F30M-080 SCREW	88	2E9-060-01	OIL RESISTANCE O RING
19	2F8-013-02	CLICK LEAF SPRING HOLDER	54	2F5-203-01	BEARING RETAINER	89	2A1-039-01	ANTI-REVERSE LEVER
20	2W2-024-01	KEY WASHER	55	2Z1-005-05	816-5 BALL BEARING	90	2E2-050-01	A20M-035 SCREW
21	2E2-092-01	B20M-050 SCREW	56	2G2-056-01	PINION GEAR	91	2M4-018-01	WORM SHAFT
22	2F6-120-01	ROTOR NUT HOLDING PLATE	57	2Z1-013-05	610-3 BALL BEARING	92	2P1-025-01	OSCILLATING SLIDER PIN
23	2E9-053-01	PROOF WATER RING	58	2E2-099-01	B20M-050 SCREW	93	2W5-287-01	SHAFT WASHER
24	2Z1-030-05	610-2.5 BALL BEARING	59	2B4-033-01	BLOCK RISE BAIL PAWL	94	2F5-498-01	WORM SHAFT COVER
25	2C2-061-01	WORM SHAFT COLLAR	60	2C2-036-01	WORM SHAFT BUSH	95	2W1-124-02	045-065 WASHER
26	2E3-093-01	ROTOR NUT	61	2Z1-014-05	306-2.5 BALL BEARING	96	2E2-003-01	B26M-036 SCREW
27	2W1-198-01	111-158 WASHER	62	2C1-071-01	WORM SHAFT COLLAR	97	2B4-031-01	REAR COVER
28	2R1-165-01	ROTOR	63	2G3-037-01	WORM SHAFT GEAR	TBAT3000H SPECIAL PARTS		
29	2R5-206-01	BAIL TRIP SHAFT	64	2E2-009-02	F23M-060 SCREW	3	2YT-530-02	SPOOL TOTAL ASSEMBLY
30	2W1-044-01	016-035 WASHER	65	2M1-032-01	OSCILLATING SLIDER	9	2YS-308-02	SPOOL ASSEMBLY
31	2Q1-132-02	BAIL SPRING	66	2W1-058-02	030-050 WASHER	10	2N1-084-02	CARBON BELT
32	2R5-205-01	BAIL PAWL	67	2M5-007-01	LINE GUIDE PIN	33	2R4-231-02	BAIL SPRING COVER
33	2R4-231-01	BAIL SPRING COVER	68	2C2-034-01	LINE GUIDE PIN BUSH	56	2G2-069-01	PINION GEAR
34	2E2-006-03	B26M-050 SCREW	69	2W1-058-04	030-050 WASHER	63	2G3-044-01	OSCILLATING GEAR
35	2E2-018-01	B30M-080 SCREW	70	2F5-181-01	OSCILLATING SLIDER COVER	73	2G1-169-01	DRIVE GEAR

Please order by parts number, not key number *Bitte, Best.-Nr. angeben (Nicht "key" -nr.)*
 Veuillez indiquer le numero de la pièce (Non "key" no.)