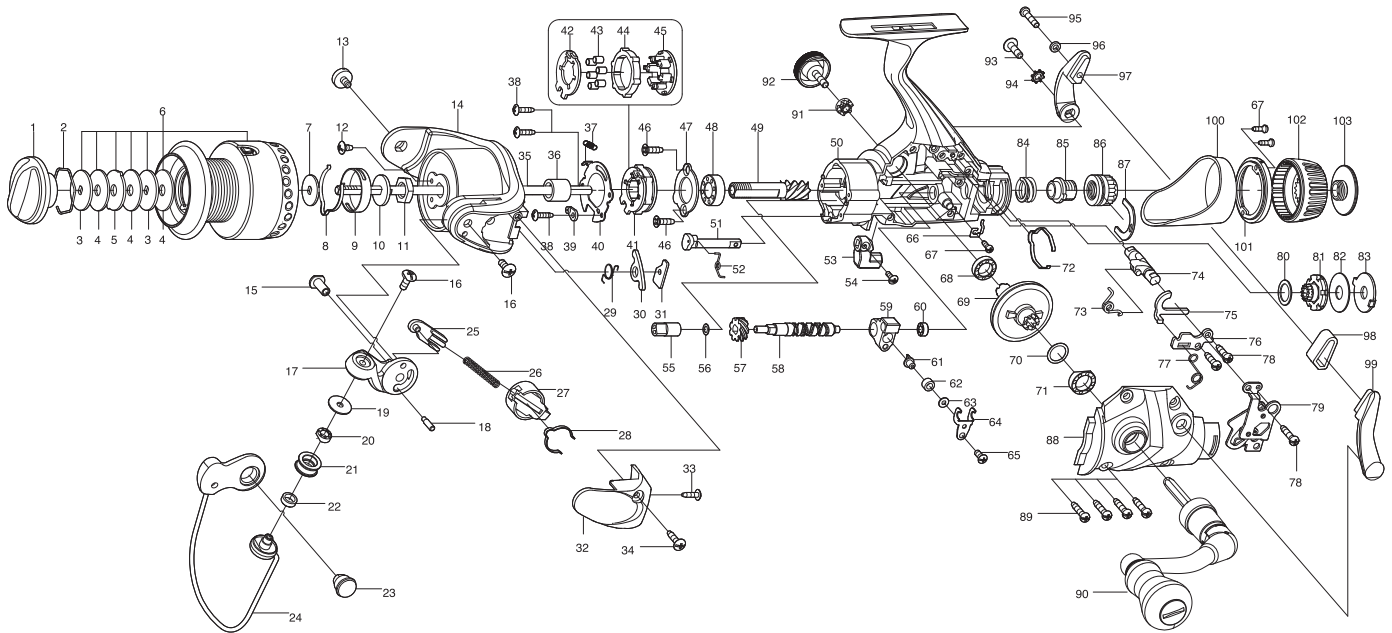


SPINNING REEL

SPORTERA

Please order by parts number, not key number
Bitte, Best.-Nr. angeben (Nicht "key" -nr.)
Veuillez indiquer le numero de la pièce (Non "key" no.)

SV3007R/SV3507R



Key NO.	Parts No.	Parts name	Key NO.	Parts No.	Parts name
1	2YD-054-16	DRAG KNOB ASSEMBLY	56	2W1-058-02	030-050 WASHER
2	2E4-009-01	DRAG WASHER RETAINER	57	2G3-020-01	OSCILLATING GEAR
3	2W2-013-01	KEY WASHER	58	2M4-010-01	WORM SHAFT
4	2W1-052-03	050-187 WASHER	59	2M1-026-01	OSCILLATING SLIDER
5	2W3-014-01	EARED WASHER	60	2Z1-014-05	306-2.5 BALL BEARING
6	2YT-228-08	SPOOL TOTAL ASSEMBLY	61	2M5-001-01	LINE GUIDE PIN
7	2W2-020-01	KEY WASHER	62	2C2-034-01	LINE GUIDE PIN BUSH
8	2L3-014-01	CLICK LEAF SPRING	63	2W1-059-01	020-049 WASHER
9	2F8-013-01	CLICK LEAF SPRING HOLDER	64	2E5-015-01	OSCILLATING SLIDER RETAINER
10	2W2-015-01	KEY WASHER	65	2E2-040-01	b26M-060 SCREW
11	2E3-007-01	ROTOR NUT	66	2L2-016-01	HIT AND RUN CLICK PAWL
12	2E1-036-01	B26-040 SCREW	67	2E1-050-01	A20-060 SCREW
13	2E0-008-01	BAIL HOLDER SCREW	68	2Z1-009-05	711-3 BALL BEARING
14	2R1-089-05	ROTOR	69	2G1-068-02	DRIVE GEAR
15	2E3-040-02	SHAFT NUT	70	2W1-035-00	080-105 WASHER
16	2E2-018-01	B30M-080 SCREW	71	2Z1-010-05	812-3.5 BALL BEARING
17	2R2-038-05	BAIL ARM	72	2L3-032-01	CONTROL KNOB CLICK LEAF SPRING
18	2P1-032-01	BAIL ARM PIN	73	2Q3-097-01	CLUTCH CAM SPINING
19	2C1-034-01	LINE ROLLER COLLAR	74	2A2-072-01	HIT AND RUN LEVER SHAFT
20	2Z1-012-05	407-2.5 BALL BEARING	75	2F6-077-01	CLUTCH PAWL
21	2R6-020-01	LINE ROLLER	76	2F6-078-01	CLUTCH PAWL RETAINER
22	2C2-032-01	LINE ROLLER BUSH	77	2Q3-100-01	CLUTCH CAM SPRING
23	2E3-019-01	BAIL HOLDER NUT	78	2E1-055-01	A26-100 SCREW
24	2YL-097-03	BAIL ASSEMBLY	79	2YF-089-01	HOLDING PLATE ASSEMBLY
25	2R5-109-01	BAIL TRIP SHAFT	80	2W1-178-01	081-125 WASHER
26	2Q1-076-01	BAIL SPRING	81	2YF-088-01	RATCHET
27	2C2-083-01	BAIL SPRING GUIDE	82	2W1-179-01	045-178 WASHER
28	2L3-029-01	CLICK LEAF SPRING	83	2W3-028-01	EARED WASHER
29	2Q3-056-01	BAIL TRIP LEVER SPRING	84	2Q1-085-01	DRAG SPRING
30	2R5-110-01	BAIL TRIP LEVER	85	2D3-040-01	PRESSURE SCREW
31	2W5-037-01	SPACER	86	2D2-012-01	HIT AND RUN CONTROL NUT
32	2R4-111-06	BAIL SPRING COVER	87	2E5-036-01	CONTROL NUT RETAINER
33	2E1-048-01	B22-080 SCREW	88	2B2-056-01	BODY COVER
34	2E1-046-01	B26-110 SCREW	89	2E1-031-01	A26-140 SCREW
35	2M3-084-01	MAIN SHAFT	90	2YH-435-01	HANDLE TOTAL ASSEMBLY
36	2A4-021-01	ONE-WAY CLUTCH INNER TUBE	91	2C3-042-01	HANDLE SCREW SLEEVE
37	2Q2-016-01	SPRING	92	2H6-001-13	HANDLE SCREW CAP
38	2E1-029-01	B22-090 SCREW	93	2E2-007-01	B30M-100 SCREW
39	2F8-079-01	ANTI-REVERSE SPRING ANCHOR	94	2E8-004-01	STARWASHER
40	2F5-205-01	ROLLER CLUTCH RETAINER	95	2E2-039-01	A26M-120 SCREW
41	2YZ-018-01	ONE-WAY CLUTCH BEARING ASSEMBLY	96	2W1-127-01	027-048 WASHER
42	2F2-028-01	ANTI-REVERSE PAWL	97	2D4-005-06	HIT AND RUN LEVER ARM (L)
43	2Z3-001-01	ROLLER	98	2C3-026-06	LEVER ARM SPACER
44	2A3-008-01	ANTI-REVERSE RATCHET	99	2D4-006-06	HIT AND RUN LEVER ARM (R)
45	2F8-078-01	CAGE	100	2F5-241-01	REAR COVER A
46	2E1-067-01	F26-090 SCREW	101	2F5-242-04	REAR COVER B
47	2F5-193-01	BEARING RETAINER	102	2D1-052-01	HIT AND RUN CONTROL KNOB
48	2Z1-003-05	714-5 BALL BEARING	103	2E0-034-06	HIT AND RUN CONTROL KNOB SCREW
49	2G2-042-02	PINION GEAR			
50	2YB-148-01	BODY ASSEMBLY	SV3507R	SPECIAL PARTS	
51	2A2-031-01	ANTI-REVERSE CAM	6	2YT-229-07	SPOOL TOTAL ASSEMBLY
52	2Q3-009-01	ANTI-REVERSE SPRING	14	2R1-090-05	ROTOR
53	2A1-026-03	ANTI-REVERSE LEVER	24	2YL-098-03	BAIL ASSEMBLY
54	2E2-013-02	B20M-060 SCREW	30	2R5-111-01	BAIL TRIP LEVER
55	2C2-054-01	WORM SHAFT BUSH	32	2R4-112-05	BAIL SPRING COVER