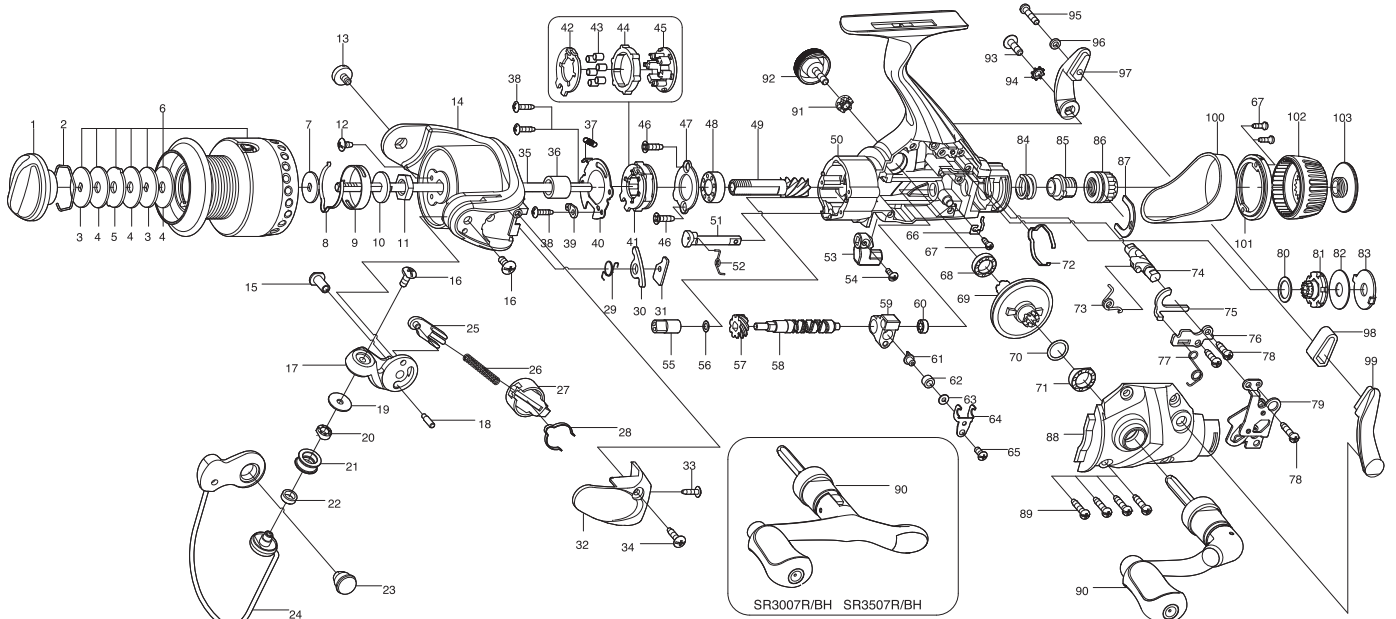




## SPINNING REEL

## SR3007R / SR3007R/BH / SR3507R / SR3507R/BH



Key NO.	Parts No.	Parts name	Key NO.	Parts No.	Parts name
1	2YD-054-03	DRAG KNOB ASSEMBLY	60	2Z1-014-05	306-2.5 BALL BEARING
2	2E4-009-01	DRAG WASHER RETAINER	61	2M5-001-01	LINE GUIDE PIN
3	2W2-013-01	KEY WASHER	62	2C2-034-01	LINE GUIDE PIN BUSH
4	2W1-052-01	050-187 WASHER	63	2W1-059-01	020-049 WASHER
5	2W3-014-01	EARED WASHER	64	2E5-015-01	OSCILLATING SLIDER RETAINER
6	2YT-228-05	SPOOL TOTAL ASSEMBLY	65	2E2-040-01	b26M-060 SCREW
7	2W2-020-01	KEY WASHER	66	2L2-016-01	HIT AND RUN CLICK PAWL
8	2L3-014-01	CLICK LEAF SPRING	67	2E1-050-01	A20-060 SCREW
9	2F8-013-01	CLICK LEAF SPRING HOLDER	68	2Z1-009-05	711-3 BALL BEARING
10	2W2-015-01	KEY WASHER	69	2G1-068-02	DRIVE GEAR
11	2E3-007-01	ROTOR NUT	70	2W1-035-00	080-105 WASHER
12	2E1-036-01	B26-040 SCREW	71	2Z1-010-05	812-3.5 BALL BEARING
13	2E0-008-01	BAIL HOLDER SCREW	72	2L3-032-01	CONTROL KNOB CLICK LEAF SPRING
14	2R1-089-05	ROTOR	73	2Q3-097-01	CLUTCH CAM SPINING
15	2E3-040-02	SHAFT NUT	74	2A2-072-01	HIT AND RUN LEVER SHAFT
16	2E2-018-01	B30M-080 SCREW	75	2F6-077-01	CLUTCH PAWL
17	2R2-038-05	BAIL ARM	76	2F6-078-01	CLUTCH PAWL RETAINER
18	2P1-032-01	BAIL ARM PIN	77	2Q3-100-01	CLUTCH CAM SPRING
19	2C1-034-01	LINE ROLLER COLLAR	78	2E1-055-01	A26-100 SCREW
20	2Z1-012-05	407-2.5 BALL BEARING	79	2YF-089-01	HOLDING PLATE ASSEMBLY
21	2R6-020-01	LINE ROLLER	80	2W1-178-01	081-125WASHER
22	2C2-032-01	LINE ROLLER BUSH	81	2YF-088-01	RATCHET
23	2E3-019-01	BAIL HOLDER NUT	82	2W1-179-01	045-178WASHER
24	2YL-097-03	BAIL ASSEMBLY	83	2W3-028-01	EARED WASHER
25	2R5-109-01	BAIL TRIP SHAFT	84	2Q1-085-01	DRAG SPRING
26	2Q1-076-01	BAIL SPRING	85	2D3-040-01	PRESSURE SCREW
27	2C2-083-01	BAIL SPRING GUIDE	86	2D2-012-01	HIT AND RUN CONTROL NUT
28	2L3-029-01	CLICK LEAF SPRING	87	2E5-036-01	CONTROL NUT RETAINER
29	2Q3-056-01	BAIL TRIP LEVER SPRING	88	2B2-056-01	BODY COVER
30	2R5-110-01	BAIL TRIP LEVER	89	2E1-031-01	A26-140 SCREW
31	2W5-037-01	SPACER	90	2YH-251-01	HANDLE TOTAL ASSEMBLY
32	2R4-111-03	BAIL SPRING COVER	91	2C3-042-01	HANDLE SCREW SLEEVE
33	2E1-048-01	B22-080 SCREW	92	2H6-001-10	HANDLE SCREW CAP
34	2E1-046-01	B26-110 SCREW	93	2E2-007-01	B30M-100 SCREW
35	2M3-084-01	MAIN SHAFT	94	2E8-004-01	STARWASHER
36	2A4-021-01	ONE-WAY CLUTCH INNER TUBE	95	2E2-039-01	A26M-120 SCREW
37	2Q2-016-01	SPRING	96	2W1-127-01	027-048 WASHER
38	2E1-029-01	B22-090 SCREW	97	2D4-005-01	HIT AND RUN LEVER ARM (L)
39	2F8-079-01	ANTI-REVERSE SPRING ANCHOR	98	2C3-026-02	LEVER ARM SPACER
40	2F5-205-01	ROLLER CLUTCH RETAINER	99	2D4-006-02	HIT AND RUN LEVER ARM (R)
41	2YZ-018-01	ONE-WAY CLUTCH BEARING ASSEMBLY	100	2F5-241-01	REAR COVER A
42	2F2-026-01	ANTI-REVERSE PAWL	101	2F5-242-01	REAR COVER B
43	2Z3-001-01	ROLLER	102	2D1-052-01	HIT AND RUN CONTROL KNOB
44	2A3-008-01	ANTI-REVERSE RATCHET	103	2E0-034-01	HIT AND RUN CONTROL KNOB SCREW
45	2F8-078-01	CAGE	SR3007R/BH	SPECIAL PARTS	SR3007R/BH SPECIAL PARTS
46	2E1-067-01	F26-090 SCREW	90	2YH-252-01	HANDLE TOTAL ASSEMBLY
47	2F5-193-01	BEARING RETAINER	SR3507R	SPECIAL PARTS	SR3507R SPECIAL PARTS
48	2Z1-003-05	714-5 BALL BEARING	6	2YT-229-05	SPOOL TOTAL ASSEMBLY
49	2G2-042-02	PINION GEAR	14	2R1-090-05	ROTOR
50	2YB-148-01	BODY ASSEMBLY	24	2YL-098-03	BAIL ASSEMBLY
51	2A2-031-01	ANTI-REVERSE CAM	30	2R5-111-01	BAIL TRIP LEVER
52	2Q3-009-01	ANTI-REVERSE SPRING	32	2R4-112-03	BAIL SPRING COVER
53	2A1-026-03	ANTI-REVERSE LEVER	SR3507R/BH	SPECIAL PARTS	SR3507R/BH SPECIAL PARTS
54	2E2-013-02	B20M-060 SCREW	6	2YT-229-05	SPOOL TOTAL ASSEMBLY
55	2C2-054-01	WORM SHAFT BUSH	14	2R1-090-05	ROTOR
56	2W1-058-02	030-050 WASHER	24	2YL-098-03	BAIL ASSEMBLY
57	2G3-020-01	OSCILLATING GEAR	30	2R5-111-01	BAIL TRIP LEVER
58	2M4-010-01	WORM SHAFT	32	2R4-112-03	BAIL SPRING COVER
59	2M1-026-01	OSCILLATING SLIDER	90	2YH-252-01	HANDLE TOTAL ASSEMBLY