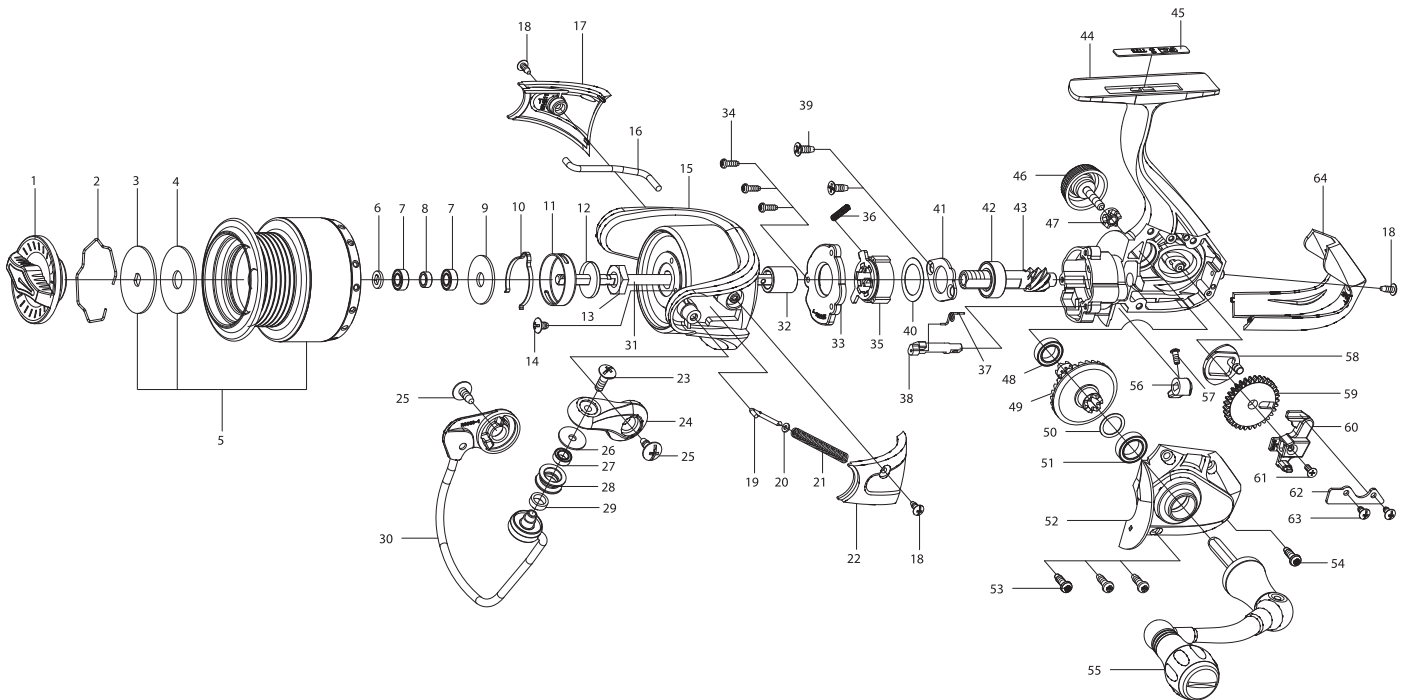




SPINNING REEL SPINFOCUS SU2000S(W)/ SU2500S(W)



KEY NO.	Parts No.	Parts name	KEY NO.	Parts No.	Parts name
1	2YD-089-19	DRAG KNOB ASSEMBLY	34	2E1-073-01	B20-060 SCREW
2	2E4-034-01	DRAG WASHER RETAINER	35	2YZ-024-01	ONE-WAY CLUTCH BEARING ASSEMBLY
3	2W2-071-01	KEY WASHER	36	2Q1-071-02	CAGE SPRING
4	2W1-226-01	080-260 WASHER	37	2Q3-122-01	ANTI-REVERSE SPRING
5	2YT-512-02	SPOOL TOTALASSEMBLY	38	2A2-098-01	ANTI-REVERSE CAM
6	2W2-016-01	KEY WASHER	39	2E1-063-01	F26-070 SCREW
7	2Z1-029-05	408-3 BALL BEARING	40	2W1-260-01	120-169 WASHER
8	2C1-119-01	SPACER	41	2F5-212-01	BEARING RETAINER
9	2W1-236-01	055-188 WASHER	42	2Z1-003-05	714-5 BALL BEARING
10	2L3-014-01	CLICK LEAF SPRING	43	2G2-181-01	PINION GEAR
11	2F8-013-01	CLICK LEAF SPRING HOLDER	44	2YB-263-04	BODY ASSEMBLY
12	2W2-015-01	KEY WASHER	45	2N2-028-10	FOOT NEME PLATE
13	2E3-007-01	ROTOR NUT	46	2H6-017-01	HANDLE SCREW CAP
14	2E1-036-01	B26-040 SCREW	47	2C3-042-01	HANDLE SCREW SLEEVE
15	2R1-150-04	ROTOR	48	2Z1-009-05	711-3 BALL BEARING
16	2R5-187-01	BAIL PAWL	49	2G1-069-01	DRIVE GEAR
17	2R4-211-01	BAIL TRIP COVER	50	2W1-035-00	080-105 WASHER
18	2E1-020-02	B22-055 SCREW	51	2Z1-010-05	812-3.5 BALL BEARING
19	2R5-188-01	BAIL TRIP SHAFT	52	2B2-132-04	BODY COVER
20	2W1-044-01	016-035 WASHER	53	2E1-045-01	A26-080 SCREW
21	2Q1-132-01	BAIL SPRING	54	2E1-050-01	A20-060 SCREW
22	2R4-210-01	BAIL SPRING COVER	55	2YH-420-02	HANDLE TOTAL ASSEMBLY
23	2E2-007-01	B30M-100 SCREW	56	2A1-036-04	ANTI-REVERSE LEVER
24	2R2-063-12	BAIL ARM	57	2E2-099-01	B20M-050 SCREW
25	2E1-025-01	B30-080 SCREW	58	2M2-018-01	OSCILLATING CAM
26	2C1-034-01	LINE ROLLER COLLAR	59	2G3-084-01	OSCILLATING GEAR
27	2Z1-012-05	407-2.5 BALL BEARING	60	2M1-079-01	OSCILLATING SILDER
28	2R6-020-01	LINE ROLLER	61	2E2-030-02	F20M-050 SCREW
29	2C2-032-01	LINE ROLLER BUSH	62	2F6-131-01	CLUTCH PAWL RETAINER
30	2YL-162-01	BAIL ASSEMBLY	63	2E1-075-01	B22-045 SCREW
31	2M3-161-01	MAIN SHAFT	64	2F5-453-01	REAR COVER
32	2A4-075-01	ONE-WAY CLUTCH INNER TUBE SU2500S(W)			
33	2F5-461-01	ROLLER CLUTCH RETAINER	5	2YT-513-02	SPOOL TOTAL ASSEMBLY