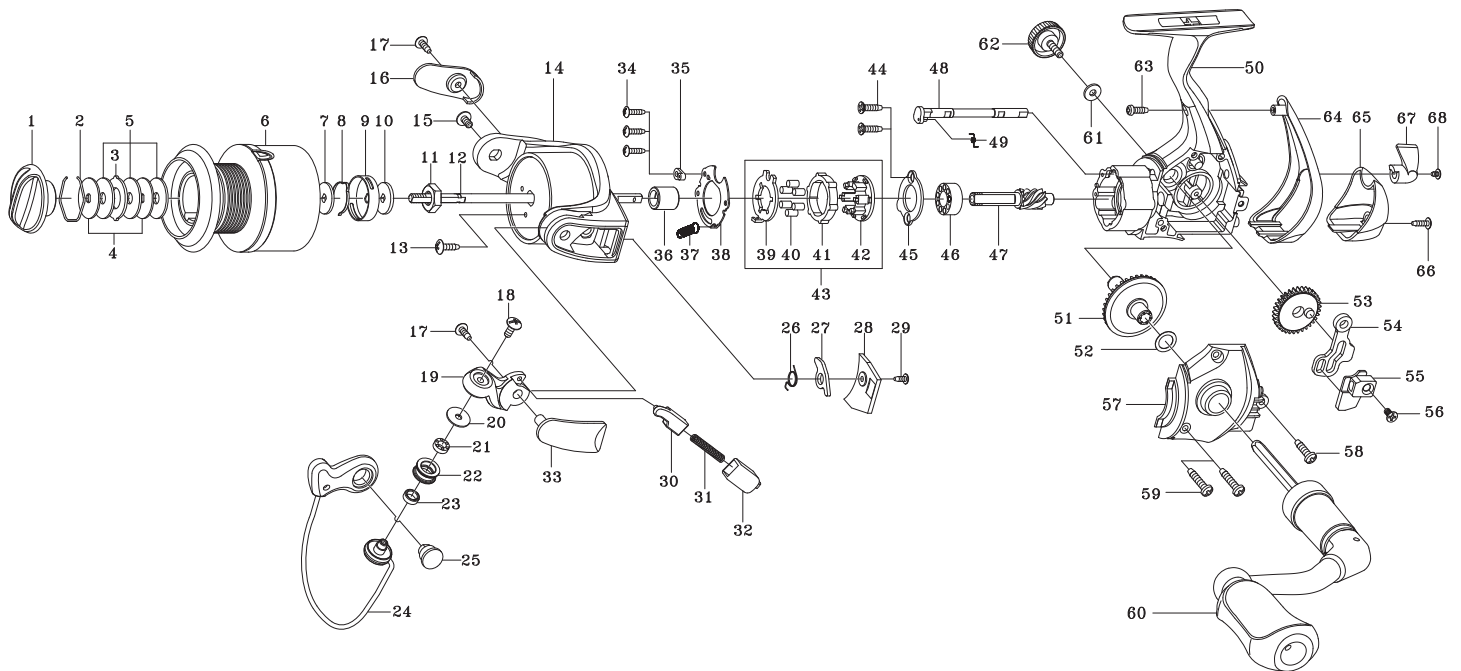


SPINNING REEL

GK3000 / 3500 / 3000H / 3500H

Please order by parts number, not key number
Bitte, Best.-Nr. angeben (Nicht "key" -nr.)
Veuillez indiquer le numero de la piece (Non "key" no.)



Key NO.	Parts No.	Parts name	Key NO.	Parts No.	Parts name
2-6	2YT-205-03	SPOOL TOTAL ASSEMBLY	45	2F5-193-01	BEARING RETAINER
1	2YD-024-03	DRAG KNOB ASSEMBLY	46	2Z1-003-01	714-5 BALL BEARING
2	2E4-009-01	DRAG WASHER RETAINER	47	2G2-077-01	PINION GEAR
3	2W3-014-01	EARED WASHER	48	2A2-048-01	ANTI-REVERSE CAM
4	2W2-013-01	KEY WASHER	49	2Q3-009-01	ANTI-REVERSE SPRING
5	2W1-052-01	050-187 WASHER	50	2YB-150-01	BODY ASSEMBLY
6	2YS-163-03	SPOOL ASSEMBLY	51	2G1-048-01	DRIVE GEAR
7	2W2-020-01	KEY WASHER	52	2W1-035-00	080-105 WASHER
8	2L3-014-01	CLICK LEAF SPRING	53	2G3-041-01	OSCILLATING GEAR
9	2F8-013-01	CLICK LEAF SPRING HOLDER	54	2M2-006-01	OSCILLATING SLIDER CRANK
10	2W2-015-01	KEY WASHER	55	2M1-033-02	OSCILLATING SLIDER
11	2E3-007-01	ROTOR NUT	56	2E2-009-01	F23M-060 SCREW
12	2M3-056-01	MAIN SHAFT	57	2YC-095-01	BODY COVER ASSEMBLY
13	2E1-036-01	B26-040 SCREW	58	2E1-055-01	A26-100 SCREW
14	2R1-070-02	ROTOR	59	2E1-031-01	A26-140 SCREW
15	2E2-004-01	B30M-060 SCREW	60	2YH-165-01	HANDLE TOTAL ASSEMBLY
16	2R4-094-02	BAIL TRIP COVER	61	2W1-004-01	029-080 WASHER
17	2E1-016-02	B26-080 SCREW	62	2H6-001-10	HANDLE SCREW CAP
18	2E2-018-01	B30M-080 SCREW	63	2E1-045-01	A26-080 SCREW
19	2R2-031-01	BAIL ARM	64	2F5-187-02	REAR COVER A
20	2C1-034-01	LINE ROLLER COLLAR	65	2F5-188-02	REAR COVER B
21	2Z1-012-02	407-2.5 BALL BEARING	66	2E1-048-01	B22-080 SCREW
22	2R6-020-01	LINE ROLLER	67	2A1-025-03	ANTI-REVERSE LEVER
23	2C2-032-01	LINE ROLLER BUSH	68	2E2-013-02	B20M-060 SCREW
24	2YL-081-01	BAIL ASSEMBLY	GK3500	SPECIAL PARTS	GK3500 SPECIAL PARTS
25	2E3-019-01	BAIL HOLDER NUT	2-6	2YT-206-03	SPOOL TOTAL ASSEMBLY
26	2Q3-056-01	BAIL TRIP LEVER SPING	6	2YS-164-03	SPOOL ASSEMBLY
27	2R5-089-01	BAIL TRIP LEVER	14	2R1-071-02	ROTOR
28	2F5-176-02	ROTOR COVER	24	2YL-082-01	BAIL ASSEMBLY
29	2E1-020-02	B22-055 SCREW	27	2R5-091-01	BAIL TRIP LEVER
30	2R5-090-01	BAIL TRIP SHAFT	28	2F5-179-02	ROTOR COVER
31	2Q1-023-01	BAIL SPRING	GK3000H	SPECIAL PARTS	GK3000H SPECIAL PARTS
32	2C2-069-01	BAIL SPRING GUIDE	2-6	2YT-205-04	SPOOL TOTAL ASSEMBLY
33	2R4-095-02	BALL SPRING COVER	6	2YS-163-04	SPOOL ASSEMBLY
34	2E1-029-01	B22-090 SCREW	47	2G2-078-01	PINION GEAR
35	2F8-079-01	ANTI-REVERSE SPRING ANCHOR	51	2G1-061-01	DRIVE GEAR
36	2A4-021-01	ONE-WAY CLUTCH INNER TUBE	GK3500H	SPECIAL PARTS	GK3500H SPECIAL PARTS
37	2Q2-016-01	SPRING	2-6	2YT-206-04	SPOOL TOTAL ASSEMBLY
38	2F5-192-01	ROLLER CLUTCH RETAINER	6	2YS-164-04	SPOOL ASSEMBLY
39	2F2-028-01	ANTI-REVERSE PAWL	14	2R1-071-02	ROTOR
40	2Z3-001-01	ROLLER	24	2YL-082-01	BAIL ASSEMBLY
41	2A3-008-01	ANTI-REVERSE RATCHET	27	2R5-091-01	BAIL TRIP LEVER
42	2F8-078-01	CAGE	28	2F5-179-02	ROTOR COVER
43	2YZ-014-01	ONE-WAY CLUTCH BEARING ASSEMBLY	47	2G2-078-01	PINION GEAR
44	2E1-067-01	F26-090 SCREW	51	2G1-061-01	DRIVE GEAR