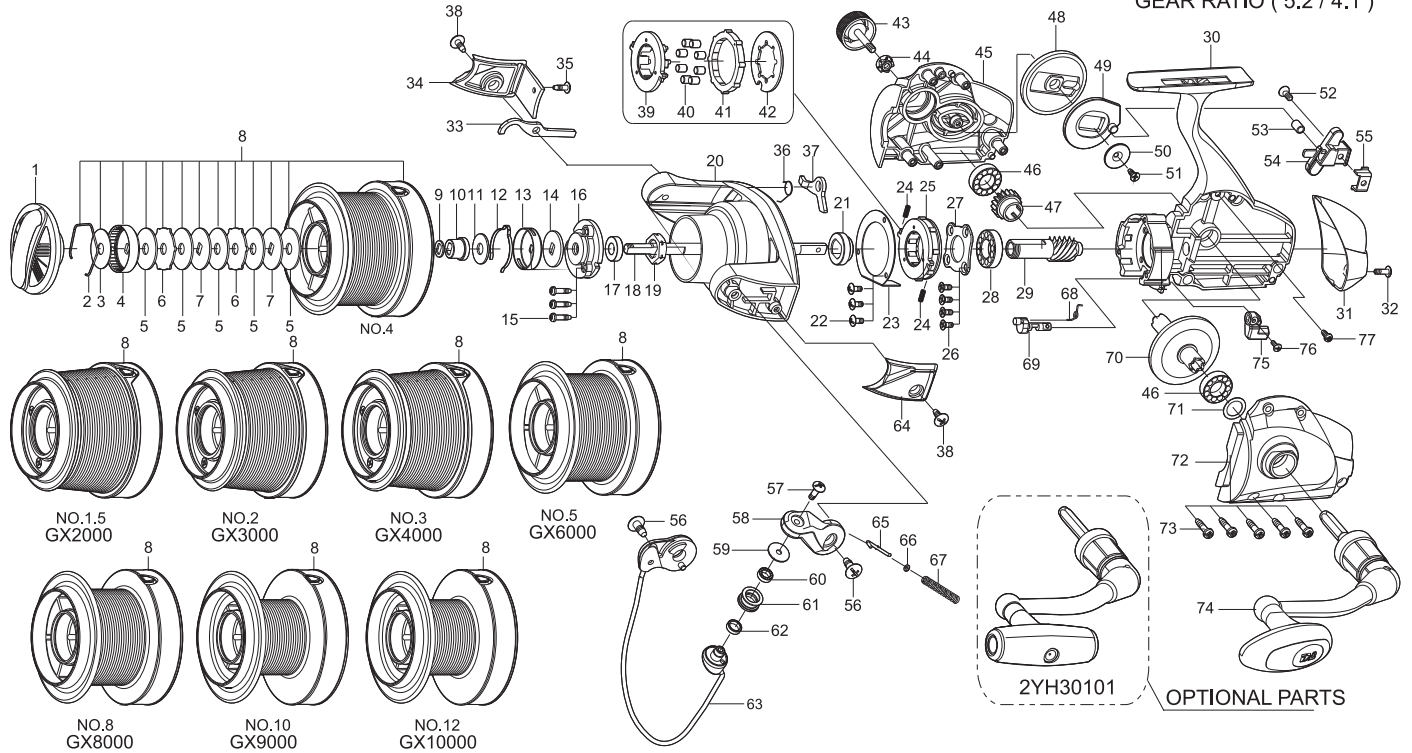




SPINNING REEL **SCEPTER**

GX2000 / 3000 / 4000 / 5000
6000 / 8000 / 9000 / 10000

GEAR RATIO (5.2 / 4.1)



Key NO.	Parts No.	Parts name	Key NO.	Parts No.	Parts name
1	2YD-036-05	DRAG KNOB ASSEMBLY	49	2M2-011-01	OSCILLATING CAM
2	2E4-013-01	DRAG WASHER RETAINER	50	2W5-062-01	COVER
3	2W1-092-01	060-210 WASHER	51	2E1-063-01	F26-070 SCREW
4	2F3-032-01	DRAG KNOB CLICK NUT	52	2E2-011-02	F30M-080 SCREW
5	2W1-094-01	060-220 WASHER	53	2C1-089-01	COLLAR
6	2W3-013-01	EARED WASHER	54	2M1-058-01	OSCILLATING SLIDER
7	2W2-033-01	KEY WASHER	55	2E5-052-01	OSCILLATING SLIDER RETAINER
8	2YT-195-07	SPOOL TOTAL ASSEMBLY	56	2E1-014-01	B40-100 SCREW
9	2W2-041-01	KEY WASHER	57	2E2-098-01	B30M-130 SCREW
10	2C1-103-01	MAIN SHAFT BUSH	58	2R2-050-01	BAIL ARM
11	2W1-115-01	061-160 WASHER	59	2C1-049-01	LINE ROLLER COLLAR
12	2L3-018-01	CLICK LEAF SPRING	60	2Z1-001-05	508-2.5 BALL BEARING
13	2F8-027-02	CLICK LEAF SPRING HOLDER	61	2R6-014-01	LINE ROLLER
14	2W2-034-01	KEY WASHER	62	2C1-068-01	COLLAR
15	2E1-055-01	A26-100 SCREW	63	2YL-134-01	BAIL ASSEMBLY
16	2YF-052-01	RETAINER ASSEMBLY	64	2R4-089-05	BAIL SPRING COVER
17	2Z1-006-05	613-3.5 BALL BEARING	65	2R5-040-01	BAIL TRIP SHAFT
18	2M3-121-01	MAIN SHAFT	66	2W1-044-01	016-035 WASHER
19	2E3-026-01	ROTOR NUT	67	2Q1-024-01	BAIL SPRING
20	2YR-050-05	ROTOR ASSEMBLY	68	2Q3-009-01	ANTI-REVERSE SPRING
21	2A4-034-05	ONE-WAY CLUTCH INNER TUBE	69	2A2-071-01	ANTI-REVERSE CAM
22	2E2-029-01	B26M-060 SCREW	70	2G1-123-01	DRIVE GEAR
23	2F5-196-01	ROLLER CLUTCH RETAINER	71	2W1-014-03	091-130 WASHER
24	2Q1-071-01	CAGE SPRING	72	2B2-093-01	BODY COVER (L)
25	2YZ-015-01	ONE-WAY CLUTCH BEARING ASSEMBLY	73	2E1-006-02	A30-130 SCREW
26	2E2-014-02	F26M-060 SCREW	74	2YH-249-03	HANDLE TOTAL ASSEMBLY]
27	2F5-178-01	BEARING RETAINER	75	2A1-026-06	ANTI-REVERSE LEVER
28	2Z1-008-05	1020-5 BALL BEARING	76	2E2-013-02	B30M-060 SCREW
29	2G2-061-01	PINION GEAR	77	2E1-060-01	A26-060 SCREW
30	2YB-207-01	BODY ASSEMBLY	GX2000	SPECIAL PARTS	
31	2F5-336-01	REAR COVER	8	2YT-192-05	SPOOL TOTAL ASSEMBLY
32	2E2-005-03	B26M-080 SCREW	GX3000	SPECIAL PARTS	
33	2R5-075-01	BAIL TRIP LEVER A	8	2YT-193-05	SPOOL TOTAL ASSEMBLY
34	2R4-090-06	BAIL TRIP COVER	GX4000	SPECIAL PARTS	
35	2E1-016-02	B26-080 SCREW	8	2YT-194-05	SPOOL TOTAL ASSEMBLY
36	2Q3-042-01	BAIL TRIP LEVER SPING	GX6000	SPECIAL PARTS	
37	2R5-074-01	BAIL TRIP LEVER B	8	2YT-196-07	SPOOL TOTAL ASSEMBLY
38	2E1-025-01	b30-080 SCREW	GX8000	SPECIAL PARTS	
39	2F8-084-01	CAGE	8	2YT-197-07	SPOOL TOTAL ASSEMBLY
40	2Z3-003-01	ROLLER	GX9000	SPECIAL PARTS	
41	2A3-009-01	ANTI-REVERSE RATCHET	8	2YT-198-07	SPOOL TOTAL ASSEMBLY
42	2F2-035-01	ANTI-REVERSE PAWL	GX10000	SPECIAL PARTS	
43	2H6-002-10	HANDLE SCREW CAP	8	2YT-199-07	SPOOL TOTAL ASSEMBLY
44	2C3-047-01	HANDLE SCREW SLEEVE	GEAR RATIO 5.2	SPECIAL PARTS	
45	2B2-092-01	BODY COVER (R)	29	2G2-045-01	PINION GEAR
46	2Z1-035-05	917-5 BALL BEARING	34	2R4-090-05	BAIL TRIP COVER
47	2G3-082-01	DRIVE PINION	70	2G1-124-01	DRIVE GEAR
48	2G3-064-01	OSCILLATING GEAR			