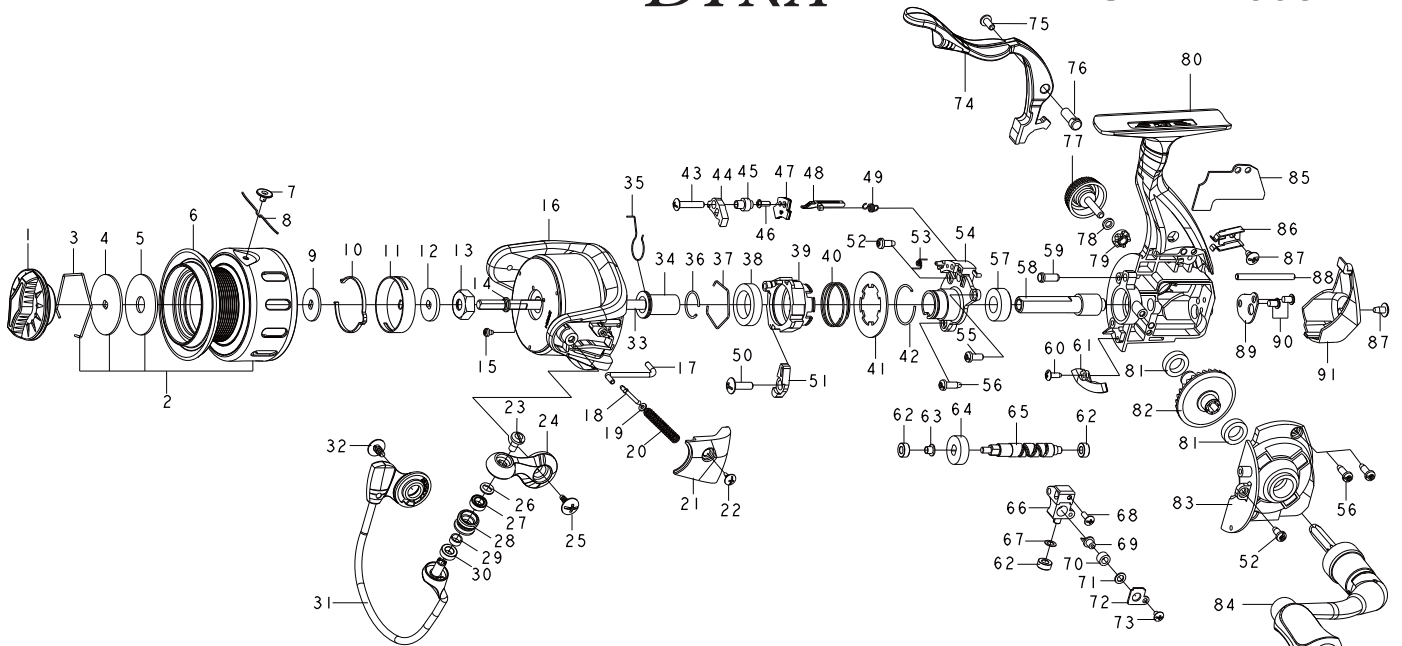




SPINNING REEL

SAMIRA
DYNA

SMAT1508/SMAT2008
SMAT2508



Key NO.	Parts No.	Parts name
1	2YD-124-03	DRAG KNOB ASSEMBLY
2	2YT-537-01	SPOOL TOTAL ASSEMBLY
3	2E4-030-01	DRAG WASHER RETAINER
4	2W2-071-01	KEY WASHER
5	2W1-226-02	080-260 WASHER
6	2S1-440-01	SPOOL
7	2S4-019-01	LINE STOPPER
8	2Q3-121-01	SPRING
9	2W2-020-01	KEY WASHER
10	2L3-015-01	CLICK LEAF SPRING
11	2F8-019-02	CLICK LEAF SPRING HOLDER
12	2W2-015-01	KEY WASHER
13	2E3-096-01	PINION GEAR NUT
14	2E9-059-01	WATERPROOF RUBBER RING
15	2E1-080-01	A20-025 SCREW
16	2R1-168-01	ROTOR
17	2R5-209-01	BAIL PAWL
18	2R5-202-01	BAIL TRIP SHAFT
19	2W1-044-01	016-035 WASHER
20	2Q1-141-01	BAIL SPRING
21	2R4-235-01	BAIL SPRING COVER
22	2E1-075-01	B22-045 SCREW
23	2E0-031-01	X30M-070 SCREW
24	2R2-082-01	BAIL ARM
25	2E1-025-01	b30-080 SCREW
26	2W4-020-01	LINE ROLLER NUT SPACER
27	2Z1-012-05	407-2.5 BALL BEARING
28	2R6-022-01	LINE ROLLER
29	2C1-077-01	LINE ROLLER COLLAR
30	2C1-120-01	COLLAR
31	2YL-197-01	BAIL ASSEMBLY
32	2E1-024-01	b30-060 SCREW
33	2M3-176-01	MAIN SHAFT
34	2C1-141-01	PINION GEAR BUAH
35	2Q3-128-01	ANTI-REVERSE PAWL SPRING
36	2E5-068-01	BALL BERING RETAINER
37	2E4-021-01	DRAG WASHER RETAINER
38	2Z1-044-05	1218-4 BALL BEARING
39	2F8-142-01	BALL BEARING SET
40	2Q1-142-01	STOPPER TORSION S/P
41	2D3-081-01	STOPPER PLATE
42	2E5-069-01	STOPPER RING
43	2E2-105-01	A26M-130 SCREW
44	2A4-096-01	ONE WAY CLUTCH STOPPER HOLDER
45	2C3-077-01	HOLDER PIN
46	2E2-099-01	B20M-050 SCREW
47	2YD-133-01	ADJUSTMENT LEVER PLATE ASSEMBLY
48	2A2-119-01	ANTI-REVERSE CAM
49	2Q2-025-01	ANTI-REVERSE SPRING
50	2E2-007-02	B30M-100 SCREW
51	2A4-094-01	ANTI-REVERSE PAWL

Key NO.	Parts No.	Parts name
52	2E1-060-01	A26-060 SCREW
53	2Q3-126-01	STOPPER S/P
54	2F8-141-01	CAGE
55	2E2-037-01	A26M-060 SCREW
56	2E1-060-01	A26-060 SCREW
57	2Z1-003-05	714-5 BALL BEARING
58	2G2-187-01	PINION GEAR
59	2YD-135-01	PUSH PIN ASSEMBLY
60	2E1-073-01	B20-060 SCREW
61	2B4-033-01	BLOCK RISE BAIL PAWL
62	2Z1-014-05	306-2.5 BALL BEARING
63	2C2-058-01	WORM SHAFT BUSH
64	2G3-012-02	WORM SHAFT GEAR
65	2M4-040-01	WORM SHAFT
66	2M1-023-01	OSCILLATING SLIDER
67	2W1-058-04	030-050 WASHER
68	2E2-013-02	B20M-060 SCREW
69	2M5-001-01	LINE GUIDE PIN
70	2C2-034-02	LINE GUIDE PIN BUSH
71	2W1-058-03	030-050 WASHER
72	2F5-048-01	OSCILLATING SLIDER COVER
73	2E2-022-01	B20M-030 SCREW
74	2YD-134-01	DRAG LEVER ASSEMBLY
75	2E0-010-01	X26M-060 SCREW
76	2E3-036-01	DRAG LEVER NUT
77	2H6-017-01	HANDLE SCREW CAP
78	2W1-107-02	030-050 WASHER
79	2C3-042-01	HANDLE SCREW SLEEVE
80	2YB-273-01	BODY ASSEMBLY
81	2Z1-009-05	711-3 BALL BEARING
82	2G1-003-02	DRIVE GEAR
83	2B2-151-01	BODY COVER
84	2YH-555-01	HANDLE TOTAL ASSEMBLY
85	2F5-515-01	WATERPROOF BODY PLATE
86	2L5-013-01	LEAF SPRING
87	2E1-028-01	B26-050 SCREW
88	2P1-015-01	OSCILLATING SLIDER PIN
89	2F5-558-01	WORM SHAFT COVER
90	2E1-071-01	B26-040 SCREW
91	2F5-497-01	REAR COVER
	SMAT2008 SPECIAL PARTS	
2	2YT-573-01	SPOOL TOTAL ASSEMBLY
6	2S1-475-01	SPOOL
	SMAT2508 SPECIAL PARTS	
2	2YT-578-01	SPOOL TOTAL ASSEMBLY
3	2E4-028-01	DRAG WASHER RETAINER
4	2W2-091-01	KEY WASHER
5	2W1-287-01	070-230 WASHER
6	2S1-481-01	SPOOL
10	2L3-014-01	CLICK LEAF SPRING
11	2F8-013-01	CLICK LEAF SPRING HOLDER