

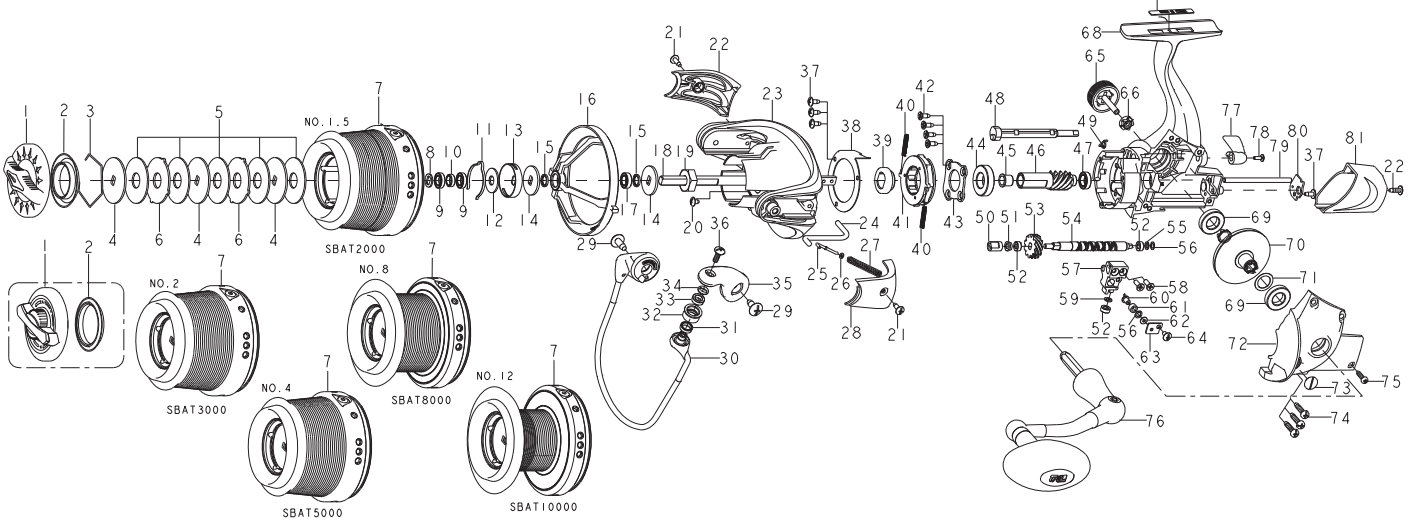


**SPINNING REEL**



**SBAT2000/3000/5000/8000/10000**

GEAR RATIO <math>5.2/4.1 >



Key NO.	Parts No.	Parts name	Key NO.	Parts No.	Parts name
1	2YD-123-02	DRAG KNOB ASSEMBLY	50	2C2-044-01	LINE GUIDE PIN COLLAR
2	2E9-054-01	PROOF WATER RING	51	2C1-046-01	COLLAR
3	2E4-003-01	DRAG WASHER RETAINER	52	2Z1-014-05	306-2.5 BALL BEARING
4	2W2-048-02	KEY WASHER	53	2G3-025-01	OSCILLATING GEAR
5	2W1-175-02	100-300 WASHER	54	2M4-012-01	WORM SHAFT
6	2W3-027-01	EARED WASHER	55	2W1-058-02	030-050 WASHER
7	2YT-557-01	SPOOL TOTAL ASSEMBLY	56	2W1-058-04	030-050 WASHER
8	2W2-041-01	KEY WASHER	57	2M1-020-01	OSCILLATING SLIDER
9	2Z1-030-05	610-2.5 BALL BEARING	58	2E2-052-02	F26M-080 SCREW
10	2C1-143-01	SPACER	59	2W1-058-03	030-050 WASHER
11	2L3-018-01	CLICK LEAF SPRING	60	2M5-004-01	LINE GUIDE PIN
12	2W1-115-01	061-160 WASHER	61	2C2-034-01	LINE GUIDE PIN BUSH
13	2F8-027-02	CLICK LEAF SPRING HOLDER	62	2W1-059-01	020-049 WASHER
14	2W2-034-01	KEY WASHER	63	2F5-103-01	OSCILLATING SLIDER COVER
15	2C1-145-01	SPACER	64	2E2-006-03	B26M-050 SCREW
16	2F1-020-01	LINE ANTI-FALL RING	65	2H6-002-08	HANDLE SCREW CAP
17	2Z1-013-05	610-3 BALL BEARING	66	2C3-047-01	HANDLE SCREW SLEEVE
18	2M3-181-01	MAIN SHAFT	67	2N2-028-10	FOOT NAME PLATE
19	2E3-097-01	ROTOR NUT	68	2B1-221-02	BODY
20	2E1-036-01	B26-040 SCREW	69	2Z1-007-05	917-4 BALL BEARING
21	2E1-016-02	B26-080 SCREW	70	2G1-029-02	DRIVE GEAR
22	2R4-240-01	BAIL TRIP COVER	71	2W1-014-03	091-130 WASHER
23	2R1-175-04	ROTOR	72	2B2-158-02	BODY COVER
24	2R5-218-01	BAIL PAWL	73	2F5-511-01	GEAR GREASE CAP
25	2R5-040-01	BAIL TRIP SHAFT	74	2E1-006-02	A30-130 SCREW
26	2W1-044-01	016-035 WASHER	75	2E1-055-01	A26-100 SCREW
27	2Q1-143-01	BAIL SPRING	76	2YH-478-01	HANDLE TOTAL ASSEMBLY
28	2R4-241-01	BAIL SPRING COVER	77	2A1-025-20	ANTI-REVERSE LEVER
29	2E1-014-01	B40-100 SCREW	78	2E2-013-02	B20M-060 SCREW
30	2YL-205-01	BAIL ASSEMBLY	79	2P1-029-01	OSCILLATING SLIDER PIN
31	2C1-068-01	COLLAR	80	2F5-509-01	WORM SHAFT COVER
32	2R6-018-01	LINE ROLLER	81	2F5-507-01	REAR COVER
33	2Z1-001-05	508-2.5 BALL BEARING	QUICK-SET PRAG SYSTEM SPECIAL PARTS		
34	2W4-021-01	LINE ROLLER NUT SPACER	1	2YD-122-01	QUICK-SET PRAG SYSTEM ASSEMBLY
35	2R2-088-02	BAIL ARM	2	2E9-057-01	PROOF WATER RING
36	2E2-007-01	B30M-100 SCREW	SBAT3000 SPECIAL PARTS		
37	2E1-015-02	B26-060 SCREW	7	2YT-558-01	SPOOL TOTAL ASSEMBLY
38	2F5-196-01	ROLLER CLUTCH RETAINER	SBAT5000 SPECIAL PARTS		
39	2A4-034-01	ONE-WAY CLUTCH INNER TUBE	7	2YT-559-01	SPOOL TOTAL ASSEMBLY
40	2YZ-015-01	ONE-WAY CLUTCH BEARING ASSEMBLY	SBAT8000 SPECIAL PARTS		
41	2Q1-071-01	CAGE SPRING	7	2YT-560-01	SPOOL TOTAL ASSEMBLY
42	2E1-063-01	F26-070 SCREW	SBAT10000 SPECIAL PARTS		
43	2F5-178-01	BEARING RETAINER	7	2YT-561-01	SPOOL TOTAL ASSEMBLY
44	2Z1-008-05	1020-5 BALL BEARING	GEAR RATIO 4.1 SPECIAL PARTS		
45	2C1-142-01	PINION GEAR BUAH	23	2R1-175-02	ROTOR
46	2G2-188-01	PINION GEAR	46	2G2-189-01	PINION GEAR
47	2Z1-009-05	711-3 BALL BEARING	53	2G3-035-01	OSCILLATING GEAR
48	2A2-041-01	ANTI-REVERSE CAM	70	2G1-045-02	DRIVE GEAR
49	2Q3-072-01	ANTI-REVERSE SPRING			