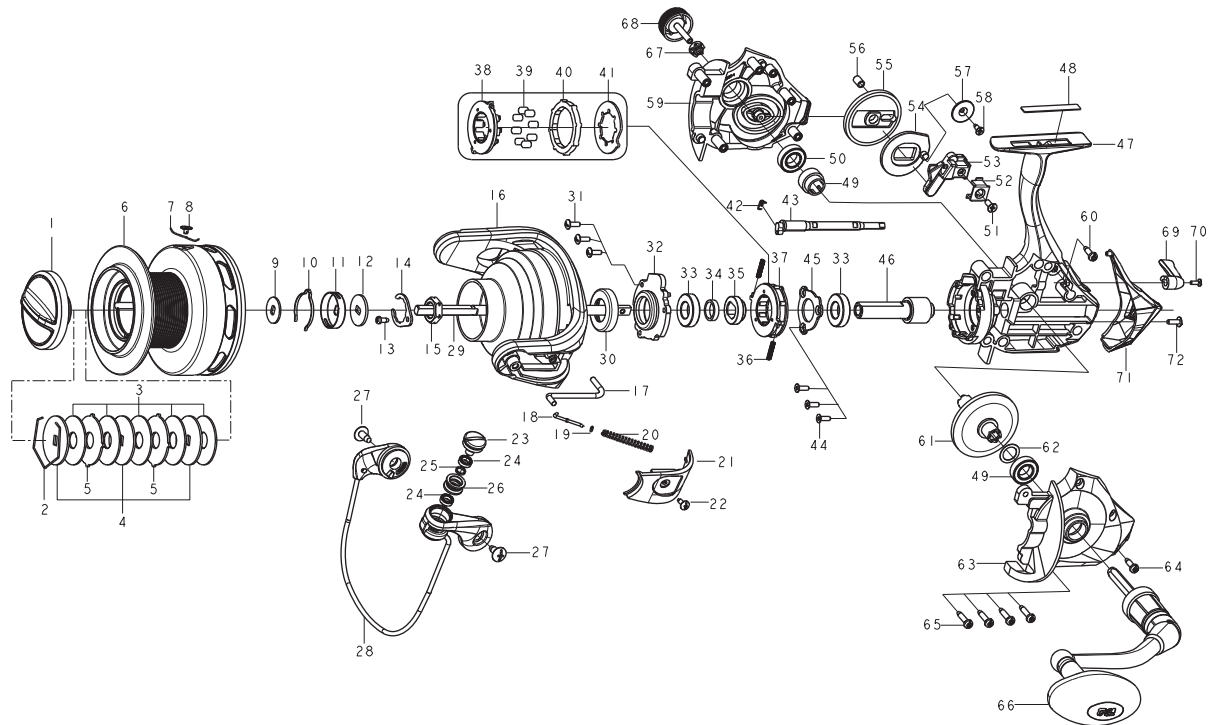




## SPINNING REEL

## CYBERNETIC

## TL15000/TL15000H

Key  
NO.

## Parts No.

## Parts name

1	2YD-064-07	DRAG KNOB ASSEMBLY
2	2E4-003-01	DRAG WASHER RETAINER
3	2W1-175-02	100-300 WASHER
4	2W2-048-02	KEY WASHER
5	2W3-027-01	EARED WASHER
6	2S1-511-03	SPOOL
7	2Q3-121-02	SPRING
8	2S4-019-01	LINE STOPPER
9	2W2-050-01	KEY WASHER
10	2L3-018-01	CLICK LEAF SPRING
11	2F8-027-02	CLICK LEAF SPRING HOLDER
12	2W2-034-01	KEY WASHER
13	2E1-060-01	A26-060 SCREW
14	2F6-028-01	ROTOR NUT HOLDING PLATE
15	2E3-026-01	ROTOR NUT
16	2R1-190-02	ROTOR
17	2R5-233-01	BAIL PAWL
18	2R5-040-01	BAIL TRIP SHAFT
19	2W1-044-01	016-035 WASHER
20	2Q1-122-01	BAIL SPRING
21	2R4-260-02	BAIL SPRING COVER
22	2E1-016-02	B26-080 SCREW
23	2E0-004-04	LINE ROLLER SCREW
24	2Z1-001-05	508-2.5 BALL BEARING
25	2W4-008-01	SPACER
26	2R6-014-01	LINE ROLLER
27	2E1-014-01	B40-100 SCREW
28	2YL-222-02	BAIL ASSEMBLY
29	2M3-088-01	MAIN SHAFT
30	2E9-026-01	PROOF WATER RING
31	2E2-005-03	B26M-080 SCREW
32	2F8-087-01	BEARING HOLDER
33	2Z1-008-05	1020-5 BALL BEARING
34	2C1-096-01	COLLAR
35	2A4-034-01	ONE-WAY CLUTCH INNER TUBE
36	2Q1-071-01	CAGE SPRING
37	2YZ-020-01	ONE-WAY CLUTCH BEARING ASSEMBLY
38	2F8-084-01	CAGE

Key  
NO.

## Parts No.

## Parts name

39	2Z3-003-01	ROLLER
40	2A3-009-01	ANTI-REVERSE RATCHET
41	2F2-033-01	ANTI-REVERSE PAWL
42	2Q3-009-01	ANTI-REVERSE SPRING
43	2A2-073-01	ANTI-REVERSE CAM
44	2E2-052-02	F26M-080 SCREW
45	2F5-259-01	BEARING RETAINER
46	2G2-090-01	PINION GEAR
47	2B1-231-02	BODY
48	2N2-041-01	FOOT NAME PLATE
49	2G3-063-01	DRIVE PINION
50	2Z1-035-05	917-5 BALL BEARING
51	2E2-011-02	F30M-080 SCREW
52	2E5-034-01	OSCILLATING SLIDER RETAINER
53	2M1-044-01	OSCILLATING SLIDER
54	2M2-011-01	OSCILLATING CAM
55	2G3-064-01	OSCILLATING GEAR
56	2C1-089-01	COLLAR
57	2W5-062-01	COVER
58	2E1-063-01	F26-070 SCREW
59	2B2-167-02	BODY COVER (R)
60	2E1-009-01	A30-100 SCREW
61	2G1-077-01	DRIVE GEAR
62	2W1-014-00	091-130 WASHER
63	2B2-166-02	BODY COVER (L)
64	2E1-009-01	A30-100 SCREW
65	2E1-006-02	A30-130 SCREW
66	2YH-526-02	HANDLE TOTAL ASSEMBLY
67	2C3-047-01	HANDLE SCREW SLEEVE
68	2H6-002-10	HANDLE SCREW CAP
69	2A1-042-02	ANTI-REVERSE LEVER
70	2E2-013-02	B20M-060 SCREW
71	2F5-524-02	REAR COVER
72	2E2-005-03	B26M-080 SCREW
	TL15000H SPECIAL PARTS	
6	2S1-511-04	SPOOL
46	2G2-119-01	PINION GEAR
61	2G1-108-01	DRIVE GEAR