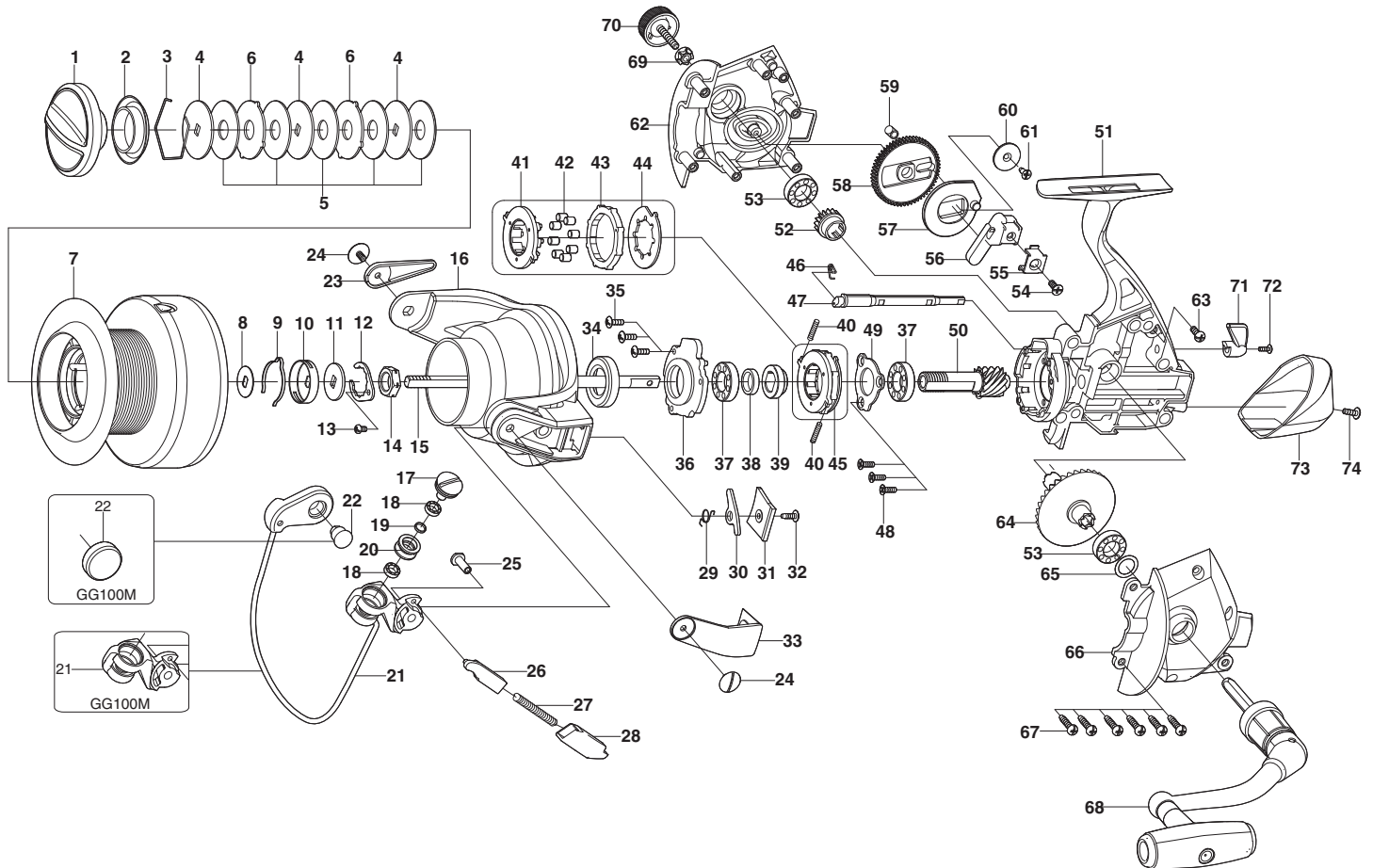


SPINNING REEL

CYBERNETIC
 Hi-Tech Frame System

GG100 / GG100M

Please order by parts number, not key number
 Bitte, Best.-Nr. angeben (Nicht "key" -nr.)
 Veuillez indiquer le numero de la piece (Non "key" no.)



Key NO.	Parts No.	Parts name	Key NO.	Parts No.	Parts name
3-7	2YT-279-01	SPOOL TOTAL ASSEMBLY	40	201-071-01	CAGE SPRING
1	2YD-064-01	DRAG KNOB ASSEMBLY	41	2F8-084-01	CAGE
2	2E9-015-01	PROOF WATER RING	42	2Z3-003-01	ROLLER
3	2E4-003-01	DRAG WASHER RETAINER	43	2A3-009-01	ANTI-REVERSE RATCHET
4	2W2-048-02	KEY WASHER	44	2F2-033-01	ANTI-REVERSE PAWL
5	2W1-175-01	100-300 WASHER	45	2YZ-020-01	ONE-WAY CLUTCH BEARING ASSEMBLY
6	2W3-027-01	EARED WASHER	46	203-009-01	ANTI-REVERSE SPRING
7	2YS-183-01	SPOOL ASSEMBLY	47	2A2-073-01	ANTI-REVERSE CAM
8	2W2-050-01	KEY WASHER	48	2E2-052-01	F26M-080 SCREW
9	2L3-018-01	CLICK LEAF SPRING	49	2F5-259-01	BEARING RETAINER
10	2F8-027-02	CLICK LEAF SPRING HOLDER	50	2G2-090-01	PINION GEAR
11	2W2-034-01	KEY WASHER	51	2B1-098-01	BODY
12	2F6-028-01	ROTOR NUT HOLDING PLATE	52	2G3-063-01	DRIVE PINION
13	2E1-060-01	A26-060 SCREW	53	2Z1-035-01	917-5 BALL BEARING
14	2E3-026-01	ROTOR NUT	54	2E2-011-01	F30M-080 SCREW
15	2M3-088-01	MAIN SHAFT	55	2E5-034-01	OSCILLATING SLIDER RETAINER
16	2R1-106-01	ROTOR	56	2M1-044-01	OSCILLATING SLIDER
17	2E0-004-02	LINE ROLLER SCREW	57	2M2-011-01	OSCILLATING CAM
18	2Z1-001-01	508-2.5 BALL BEARING	58	2G3-064-01	OSCILLATING GEAR
19	2W4-008-01	SPACER	59	2C1-089-01	COLLAR
20	2R6-014-01	LINE ROLLER	60	2W5-062-01	COVER
21	2YL-115-01	BAIL ASSEMBLY	61	2E1-063-01	F26-070 SCREW
22	2R3-020-03	BAIL HOLDER	62	2B2-058-01	BODY COVER(R)
23	2R4-130-01	BAIL TRIP COVER	63	2E1-009-01	A30-100 SCREW
24	2E0-039-01	SIDE COVER SCREW	64	2G1-077-01	DRIVE GEAR
25	2E3-051-01	SHAFT NUT	65	2W1-014-00	091-130 WASHER
26	2R5-088-01	BAIL TRIP SHAFT	66	2B2-059-01	BODY COVER(L)
27	2Q1-092-01	BAIL SPRING	67	2E1-006-02	A30-130 SCREW
28	2C2-096-01	BAIL SPRING GUIDE	68	2YH-196-01	HANDLE TOTAL ASSEMBLY
29	2Q3-056-01	BAIL TRIP LEVER SPRING	69	2C3-047-01	HANDLE SCREW SLEEVE
30	2R5-087-01	BAIL TRIP LEVER	70	2H6-002-02	HANDLE SCREW CAP
31	2F5-267-01	ROTOR COVER	71	2A1-025-04	ANTI-REVERSE LEVER
32	2E1-016-02	B26-080 SCREW	72	2E2-013-02	B20M-060 SCREW
33	2R4-129-01	BAIL SPRING COVER	73	2F5-258-01	REAR COVER
34	2E9-026-01	PROOF WATER RING	74	2E2-005-03	B26M-080 SCREW
35	2E2-005-03	B26M-080 SCREW			
36	2F8-087-01	BEARING HOLDER	GG100M	SPECIAL PARTS	
37	2Z1-008-01	1020-5 BALL BEARING	3-7	2YT-279-02	SPOOL TOTAL ASSEMBLY
38	2C1-096-01	COLLAR	7	2YS-183-02	SPOOL ASSEMBLY
39	2A4-034-01	ONE-WAY CLUTCH INNER TUBE	21	2R2-045-01	BAIL ARM
			22	2R3-039-01	BAIL HOLDER