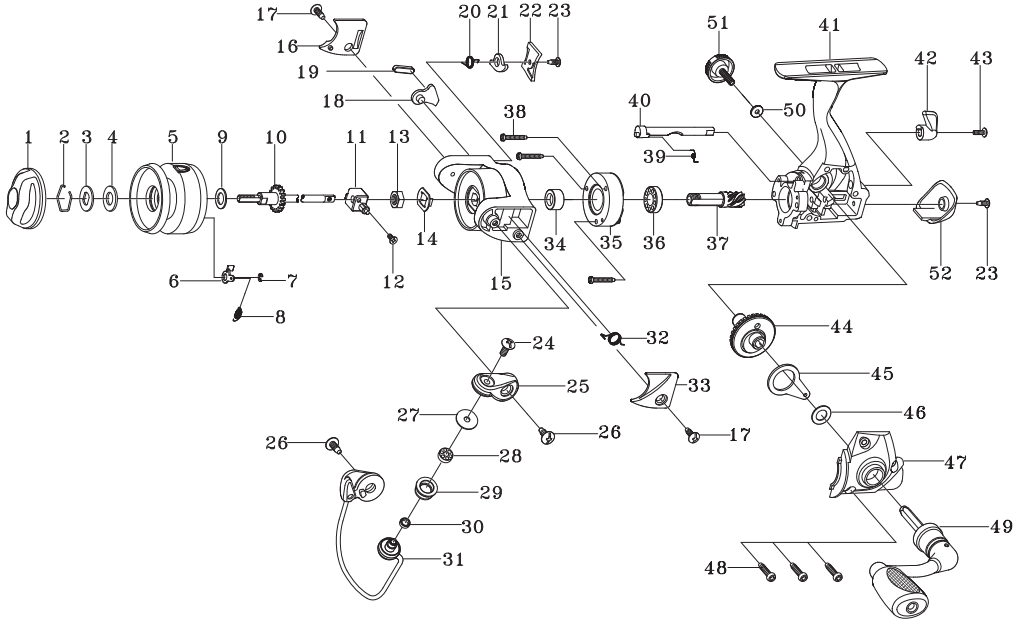


# SPINNING REEL

# CETUS

# LF500/LF500M



### Key NO.

### Parts No.

### Parts name

2-8	2YT-140-01	SPOOL TOTAL ASSEMBLY
1	2YD-035-01	DRAG KNOB ASSEMBLY
2	2E4-017-01	DRAG WASHER RETAINER
3	2W2-031-01	KEY WASHER
4	2W1-101-01	064-124 WASHER
5	2YS-081-01	SPOOL ASSEMBLY
6	2L2-015-01	CLICK PAWL
7	2E5-020-01	E1.5 RETAINER
8	2Q2-015-01	CLICK PAWL SPRING
9	2W1-097-02	059-100 WASHER
10	2F3-038-01	CLICK GEAR
11	2M1-029-01	OSCILLATING SLIDER
12	2E2-030-01	F20M-050 SCREW
13	2E3-001-01	ROTOR NUT
14	2C3-027-01	ROTOR NUT RETAINER
15	2R1-065-01	ROTOR
16	2R4-080-01	BAIL TRIP COVER
17	2E1-016-02	B26-080 SCREW
18	2R5-081-01	BAIL TRIP LEVER A
19	2R5-082-01	BAIL TRIP PLATE
20	2Q3-084-01	BAIL TRIP LEVER SPING
21	2R5-083-01	BAIL TRIP LEVER B
22	2F5-130-01	ROTOR COVER
23	2E1-020-02	B22-055 SCREW
24	2E2-018-01	B30M-080 SCREW
25	2R2-028-01	BAIL ARM
26	2E1-037-01	B30-080 SCREW
27	2C1-056-01	LINE ROLLER COLLAR

### Key NO.

### Parts No.

### Parts name

28	2Z1-012-02	407-2.5 BALL BEARING
29	2R6-012-02	LINE ROLLER
30	2C2-032-01	LINE ROLLER BUSH
31	2YL-075-01	BAIL ASSEMBLY
32	2Q1-051-01	BAIL SPRING
33	2R4-088-01	BAIL SPRING COVER
34	2A4-040-01	ONE-WAY CLUTCH INNER TUBE
35	2YZ-012-01	ONE-WAY CLUTCH BEARING ASSY
36	2Z1-006-01	613-3.5 BALL BEARING
37	2G2-043-01	PINION GEAR
38	2E1-052-01	A20-130 SCREW
39	2Q3-009-01	ANTI-REVERSE SPRING
40	2A2-040-01	ANTI-REVERSE CAM
41	2YB-093-01	BODY ASSEMBLY
42	2A1-022-01	ANTI-REVERSE LEVER
43	2E2-013-02	B20M-060 SCREW
44	2G1-028-01	DRIVE GEAR
45	2M2-001-01	OSCILLATING SLIDER
46	2W1-019-00	071-103 WASHER
47	2YC-086-01	BODY COVER ASSEMBLY
48	2E1-005-02	A26-120 SCREW
49	2YH-116-01	HANDLE TOTAL ASSY
50	2W1-004-01	029-080 WASHER
51	2H6-016-01	HANDLE SCREW CAP
52	2F5-077-01	REAR COVER
<b>LF500M SPECIAL PARTS</b>		
2-8	2YT-183-01	SPOOL TOTAL ASSEMBLY
5	2YS-104-01	SPOOL ASSEMBLY