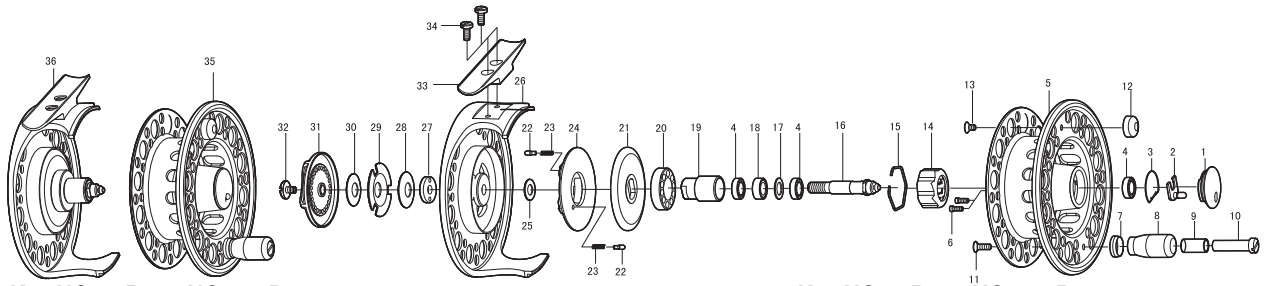


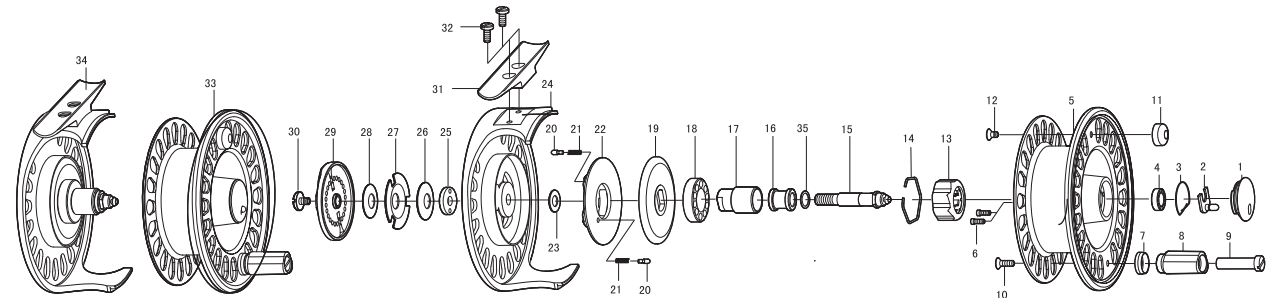
T211R / T209R / T208R / T206R PARTS LIST



| Key NO. | Parts NO. | Parts name |
|---------|------------|---------------------------------|
| 1 | 2S2-014-01 | SPOOL CAP |
| 2 | 2YE-001-01 | SPOOL RELEASE LEVER ASSY |
| 3 | 2Q3-088-01 | SPOOL RELEASE LEVER SPRING |
| 4 | 2Z1-013-05 | 610-3 BALL BEARING |
| 5 | 2S1-226-01 | SPOOL |
| 6 | 2E2-045-01 | X20M-050 SCREW |
| 7 | 2C3-032-02 | HANDLE KNOB RING |
| 8 | 2H4-037-02 | HANDLE KNOB |
| 9 | 2C3-044-01 | HANDLE KNOB RING |
| 10 | 2E0-020-02 | HANDLE KNOB SCREW |
| 11 | 2E2-052-02 | F26M-080 SCREW |
| 12 | 2R8-070-01 | BALANCER |
| 13 | 2E2-014-02 | F26M-060 SCREW |
| 14 | 2YZ-013-01 | ONE-WAY CLUTCH BEARING ASSEMBLY |
| 15 | 2E4-009-01 | DRAG WASHER RETAINER |
| 16 | 2M3-090-02 | SPOOL SHAFT |
| 17 | 2W1-186-01 | 062-100 WASHER |
| 18 | 2C1-092-01 | SPACER |
| 19 | 2A4-061-01 | ONE-WAY CLUTCH INNER TUBE |
| 20 | 2Z1-008-05 | 1020-5 BALL BEARING |
| 21 | 2YD-071-01 | BRAKE DISC ASSY |
| 22 | 2P1-054-01 | CLICK PIN |
| 23 | 2Q2-019-01 | CLICK PIN SPRING |
| 24 | 2F8-092-01 | CLICK HOLDER |
| 25 | 2W1-008-01 | 048-080 WASHER |
| 26 | 2B1-100-04 | BODY |

| Key NO. | Parts NO. | Parts name | |
|---------|------------|----------------------|----------------------|
| 27 | 2E3-054-02 | NUT | |
| 28 | 2L1-017-01 | SPRING WASHER | |
| 29 | 2W1-187-01 | 072-256 WASHER | |
| 30 | 2L1-018-01 | SPRING WASHER | |
| 31 | 2D1-054-02 | DRAG KNOB | |
| 32 | 2E0-041-01 | X30M-045 SCREW | |
| 33 | 2F8-091-01 | STAND | |
| 34 | 2E0-030-01 | STAND SCREW | |
| 35 | 2YT-326-01 | SPOOL TOTAL ASSEMBLY | |
| 36 | 2YB-177-02 | BODY TOTAL ASSEMBLY | |
| T208R | 1 | 2S2-014-02 | SPOOL CAP |
| SPECIAL | 5 | 2S1-228-01 | SPOOL |
| PARTS | 26 | 2B1-102-04 | BODY |
| | 35 | 2YT-328-01 | SPOOL TOTAL ASSEMBLY |
| | 36 | 2YB-181-02 | BODY TOTAL ASSEMBLY |
| T209R | 1 | 2S2-014-03 | SPOOL CAP |
| SPECIAL | 5 | 2S1-230-01 | SPOOL |
| PARTS | 26 | 2B1-104-04 | BODY |
| | 35 | 2YT-330-01 | SPOOL TOTAL ASSEMBLY |
| | 36 | 2YB-185-02 | BODY TOTAL ASSEMBLY |
| T211R | 1 | 2S2-014-04 | SPOOL CAP |
| SPECIAL | 5 | 2S1-232-01 | SPOOL |
| PARTS | 26 | 2B1-106-04 | BODY |
| | 35 | 2YT-332-01 | SPOOL TOTAL ASSEMBLY |
| | 36 | 2YB-189-02 | BODY TOTAL ASSEMBLY |

S211R / S209R / S208R / S206R PARTS LIST



| Key NO. | Parts NO. | Parts name |
|---------|------------|---------------------------------|
| 1 | 2S2-010-03 | COOLING SHIELD |
| 2 | 2YE-001-01 | SPOOL RELEASE LEVER ASSY |
| 3 | 2Q3-088-01 | SPOOL RELEASE LEVER SPRING |
| 4 | 2Z1-013-05 | 610-3 BALL BEARING |
| 5 | 2S1-227-01 | SPOOL |
| 6 | 2E2-045-01 | X20M-050 SCREW |
| 7 | 2C3-032-02 | HANDLE KNOB RING |
| 8 | 2H4-048-01 | HANDLE KNOB |
| 9 | 2E0-020-02 | HANDLE KNOB SCREW |
| 10 | 2E2-052-02 | F26M-080 SCREW |
| 11 | 2R8-064-02 | BALANCER |
| 12 | 2E2-014-02 | F26M-060 SCREW |
| 13 | 2YZ-013-01 | ONE-WAY CLUTCH BEARING ASSEMBLY |
| 14 | 2E4-009-01 | DRAG WASHER RETAINER |
| 15 | 2M3-090-02 | SPOOL SHAFT |
| 16 | 2C3-045-01 | BUSH |
| 17 | 2A4-061-01 | ONE-WAY CLUTCH INNER TUBE |
| 18 | 2Z1-008-05 | 1020-5 BALL BEARING |
| 19 | 2YD-071-02 | BRAKE DISC ASSY |
| 20 | 2P1-054-01 | CLICK PIN |
| 21 | 2Q2-019-01 | CLICK PIN SPRING |
| 22 | 2F8-092-01 | CLICK HOLDER |
| 23 | 2W1-008-01 | 048-080 WASHER |
| 24 | 2B1-100-05 | BODY |
| 25 | 2E3-054-02 | NUT |

| Key NO. | Parts NO. | Parts name | |
|---------|------------|----------------------|----------------------|
| 26 | 2L1-017-01 | SPRING WASHER | |
| 27 | 2W1-187-01 | 072-256 WASHER | |
| 28 | 2L1-018-01 | SPRING WASHER | |
| 29 | 2D1-055-02 | DRAG KNOB | |
| 30 | 2E0-041-01 | X30M-045 SCREW | |
| 31 | 2F8-091-02 | STAND | |
| 32 | 2E0-030-01 | STAND SCREW | |
| 33 | 2YT-327-01 | SPOOL TOTAL ASSEMBLY | |
| 34 | 2YB-178-02 | BODY TOTAL ASSEMBLY | |
| 35 | 2W1-087-01 | 060-080WASHER | |
| S208R | 1 | 2S2-010-04 | SPOOL CAP |
| SPECIAL | 5 | 2S1-229-01 | SPOOL |
| PARTS | 24 | 2B1-102-05 | BODY |
| | 33 | 2YT-329-01 | SPOOL TOTAL ASSEMBLY |
| | 34 | 2YB-182-02 | BODY TOTAL ASSEMBLY |
| S209R | 1 | 2S2-010-05 | SPOOL CAP |
| SPECIAL | 5 | 2S1-231-01 | SPOOL |
| PARTS | 24 | 2B1-104-05 | BODY |
| | 33 | 2YT-331-01 | SPOOL TOTAL ASSEMBLY |
| | 34 | 2YB-186-02 | BODY TOTAL ASSEMBLY |
| S211R | 1 | 2S2-010-06 | SPOOL CAP |
| SPECIAL | 5 | 2S1-233-01 | SPOOL |
| PARTS | 24 | 2B1-106-05 | BODY |
| | 33 | 2YT-333-01 | SPOOL TOTAL ASSEMBLY |
| | 34 | 2YB-190-02 | BODY TOTAL ASSEMBLY |